

DEPARTMENT OF THE ARMY TECHNICAL MANUAL

**DIRECT SUPPORT, GENERAL SUPPORT
AND DEPOT MAINTENANCE MANUAL
INCLUDING REPAIR PARTS AND
SPECIAL TOOLS LIST**

**LAUNCHER, ROCKET: 3.5-INCH, M20A1, W/E
(1055-840-1841)
LAUNCHER, ROCKET: 3.5-INCH, M20A1B1, W/E
(1055-840-1842)**

**This copy is a reprint which includes current
pages from Changes 1 and 2.**

**HEADQUARTERS, DEPARTMENT OF THE ARMY
DECEMBER 1968**

CHANGE }
No. 2

HEADQUARTERS
DEPARTMENT OF THE ARMY
WASHINGTON, D.C., 8 June 1971

**DIRECT SUPPORT, GENERAL SUPPORT
AND DEPOT MAINTENANCE MANUAL
INCLUDING REPAIR PARTS AND
SPECIAL TOOLS LIST
LAUNCHER, ROCKET, 3.5-INCH, M20A1, W/E
(1 055-840-1841)
LAUNCHER, ROCKET, 3.5-INCH, M20AIB1, W/E
(1055-840-1842)**

TM 9-1055-201-35, 16 December 1968, is changed as follows:

Page 3-1, Table 3-1, Inspection and repair column:

Opposite Front barrel assembly, after last sentence, add the following:

Inspect front barrel assembly for unpainted surfaces and dents. Paint unpainted surfaces with enamel-FSN 8010-297-2105.

To inspect the front barrel assembly for dents use the -inch (improvised) I)lug gage (fig. 3-1.1), which should pass freely through the tube of the barrel, for serviceability.

If the 6inch gage does not pass through the barrel use the 20-inch plug gage (fig. 3-1.1), to remove slight wrinkles and dents less than 1/2-inch deep.

Insert gage in barrel tube and top end of gage with a suitable tool, driving gage through barrel tube.

After the 20-inch gage has been tapped through the barrel tube, use tile 6-inch. gage, which must pass freely through the barrel tube.

Barrels, with dents 1/2-inch or more or deep wrinkles, will be replaced.

Barrel assemblies (front and rear) must also be inspected in assembled position with 6inch plug gage. Gage must pass freely through both barrel assemblies.

NOTE

Plug gaging and bore sighting are required wherever barrels are repaired or replaced.

Page 3-2, Table 3-2, Inspection and repair column:

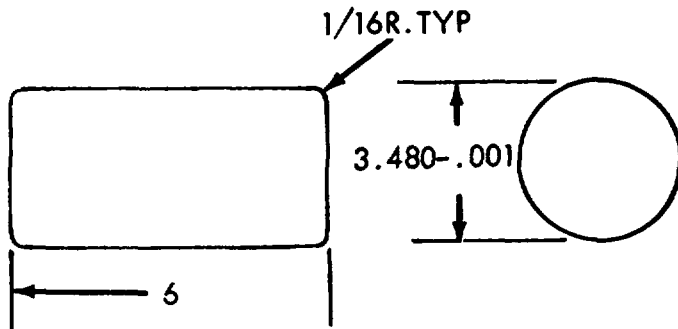
Opposite Rear barrel assembly, after last sentence, add the following:

Inspect rear barrel assembly for unpainted surfaces and dents. Paint unpainted surfaces same as front barrel assembly. Inspect for dents and check barrel tube using plug gage (fig. 3-1.1) using same procedures as for the front barrel assembly.

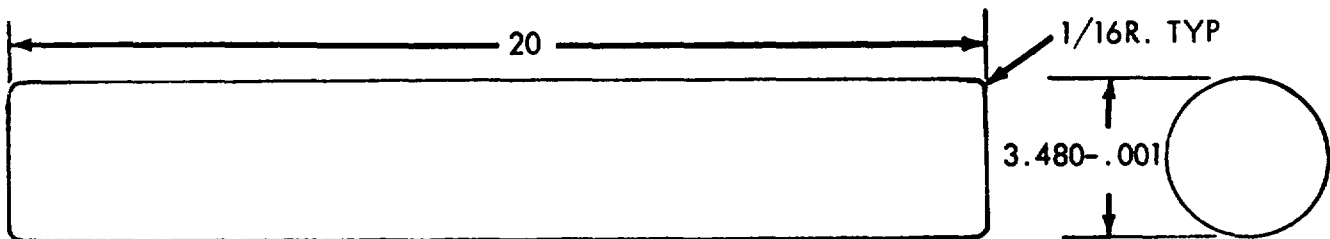
Launchers will be replaced if rear barrel assemblies contain deep wrinkles or dents 1/2 -inch deep or more.

Page 3-3: Add the following:

NOTE:
ALL DIMENSIONS SHOWN ARE IN INCHES



**NOTE: USE A HARD MAPLE WOOD.
 IF NOT AVAILABLE USE A SUITABLE
 MATERIAL.**



WE 69411

Figure 3-1.1 (Added) Improved plug gages.

By Order of the Secretary of the Army:

Official:

VERNE L. BOWERS,
*Major General, United States Army,
 The Adjutant General.*

W. C. WESTMORELAND,
*General, United States Army,
 Chief of Staff.*

DISTRIBUTION:

To be distributed in accordance with DA Form 12-40 (qty rqr block No. 35) direct and general Support maintenance requirements for launchers, Rocket 3.5 inch, M20A1 and M20A1B1.

Change }
No. 1 }

HEADQUARTERS
DEPARTMENT OF THE ARMY
Washington, D. C. 15 December 1970

**Direct Support, General Support
and Depot Maintenance Manual
Including Repair Parts and
Special Tools List
LAUNCHER, ROCKET, 3.5-INCH, M20A1, W/E
(1055-840-1841)
LAUNCHER, ROCKET, 3.5-INCH, M20AIB1, W/E
(1055-840-1842)**

TM 9-1055-201-35, 16 December 1968, is changed as follows:

Page 2-2, table 2-3, Standard column, opposite Firing mechanism group, add note after first paragraph as follows:

NOTE

When the firing mechanism is actuated a "double click" will be audible. This is not a defect and no attempt at adjustment will be made to eliminate it. The double click is an inherent characteristic of the 3.5-Inch Rocket Launcher firing mechanism.

By Order of the Secretary of the Army:

Official:

KENNETH G. WICKHAM,
Major General, United States Army,
The Adjutant General.

W. C. WESTMORELAND,
United States Army,
Chief of Staff.

Distribution:

To be distributed in accordance with DA Form 12-40 (qty rqr block No. 35) Direct and General Support Maintenance requirements for Launchers, Rocket, 3.5-Inch, M20A1 and M20A1B1.

**DIRECT SUPPORT, GENERAL SUPPORT AND DEPOT
MAINTENANCE MANUAL INCLUDING
REPAIR PARTS AND SPECIAL TOOLS LIST
LAUNCHER, ROCKET, 3.5-INCH, M20A1, W/E
(1055-840-1841)
AND
LAUNCHER, ROCKET, 3.5-INCH, M20AIB1, W/E
(1055-840-1842)**

This manual is current as of 15 August 1968.

			Paragraph	Page
CHAPTER	1.	INTRODUCTION		
Section	I.	General.....	1-1, 1-2	1-1
	II.	Description and data.....	1-3	1-1
CHAPTER	2.	DIRECT SUPPORT, GENERAL SUPPORT AND DEPOT MAINTENANCE INSTRUCTIONS.		
Section	I.	Repair parts, special tools and equipment	2-1, 2-2	2-1
	II.	Troubleshooting.....	2-3	2-1
	III.	Maintenance inspections	2-4	2-2
	IV.	Removal and installation of major components	2-5	2-2
	V.	Depot maintenance instructions.....	2-6	2-2
CHAPTER	3.	REPAIR INSTRUCTIONS	3-1	3-1
	4.	FINAL INSPECTION	4-1	4-1
APPENDIX	A.	REFERENCES.....		A-1
	B.	DIRECT SUPPORT, GENERAL SUPPORT AND DEPOT MAINTENANCE REPAIR PARTS AND SPECIAL TOOLS LIST		B-1
		REPAIR PARTS FOR:		
		Front barrels and contractor latch assembly (fig. B1).....		B-4
		Front barrel assembly (M20A1 only) (fig. B2)		B-4
		Stock (M20A1 and M20AIB1) (fig. B3).....		B-5
		Contractor latch assembly 7184159 (M20A1 and M20A1B1) (fig. B4)		B-5
		Contractor latch assembly 7162791 (M20A1 and M20A1B1) (fig. B5)		B-6
		Firing mechanism group (M20A1 and M20A1B1) (fig. B6)		B-7

* This manual supersedes chapters 4 through 8 inclusive in their entirety of TM 9-1055-201-14, 13 May 1964 including changes and TM 9-1055-201-35P, 12 December 1962 including changes.

APPENDIX	B.	Reflecting sight group (M20A1 and M20A1B1) (fig. B7).....	B-8
		Reflecting sight assembly 7162947 (fig. B8).....	B-8
		Rear barrel assembly (M20A1 only) (fig. B9).....	B-8
		Rear barrel assembly (M20A1B1 only) (fig. B10).....	B-9
		TOOLS AND EQUIPMENT (fig. B11).....	B-9
		SPECIAL EQUIPMENT (fig. B12).....	B-10

CHAPTER 1
INTRODUCTION

Section I. GENERAL

1-1. Scope

These instructions are in accordance with the MAC (refer to TM 9-1055-201-12) and are published for the use of direct support, general support, and depot maintenance personnel maintaining the 3.5-Inch, M20A1 and M20A1B1, Rocket Launchers. They provide information on the maintenance of the equipment which is beyond the scope of the tools, equipment, personnel, or supplies normally available to operator and organizational maintenance.

for equipment maintenance will be only those prescribed in TM 38-750, Army Equipment Record Procedures.

b. *Recommendations for Equipment Publication Improvements.* Report of errors, omissions, and recommendations for improving this publication by the individual user is encouraged. Reports should be submitted on DA Form 2028 (Recommended changes to DA Publications) and forwarded direct to:

Commanding General
U.S. Army Weapons Command
ATTN: AMSWE-SMM-P
Rock Island, Illinois 61201

1-2. Forms and Records

- a. *General.* DA Forms and procedures used

Section II. DESCRIPTION AND DATA

1-3. Description and Tabulated Data

See TM 9-1055-201-12.

CHAPTER 2

DIRECT SUPPORT, GENERAL SUPPORT AND DEPOT

MAINTENANCE INSTRUCTIONS

Section I. REPAIR PARTS, SPECIAL TOOLS AND EQUIPMENT

2-1. Repair Parts

a. *Operator and Organizational Maintenance.*
Refer to TM 9-1055-201-12.

b. *Direct Support, General Support and Depot Maintenance.* Refer to appendix B.

2-2. Special Tools and Equipment

a. Refer to appendix B.
b. Refer to table 2-1 for special equipment required.

Table 2-1. Special Equipment

Item	Identifying number	Reference Fig Par	Use
TESTER ELECTRICAL OUTPUT:	7142554	3-6 B-12	Checking electrical functioning of contactor latch assembly and firing mechanism

Section II. TROUBLESHOOTING

2-3. General

The information contained in table 2-2 will aid direct and general support maintenance personnel to restore worn, damaged, or inoperative equipment to a

serviceable condition. All repair and maintenance work will be done with standard service equipment by trained personnel, using techniques in applicable regulations.

Table 2-2. Troubleshooting

Malfunction (symptoms)	Probable cause	Corrective action
Failure to couple	Burs on screw	Remove burs
	Cracked or damaged coupling screw	Replace front barrel assembly (table 3-1)
Failure to lock in coupled position	Broken helical torsion spring (coupling lever).	Replace spring (22, fig. B-9) M20A1 and (15, fig. B-10) M20A1B1.
Failure of barrel latch assembly to lock in carrying position.	Broken helical compression spring	Replace spring (7, fig. B-9) M20A1 and (5, fig. B-10) M20A1B1.
Failure of hook and strike to hold barrels in carrying position (M20A1).	Deformed parts	Replace hook (4, fig. B-2) and strike (3, fig. B-2).
Failure of hook and eye to hold barrels..... in carrying position (M20A1B1).	Deformed hook and eye	Replace front barrel (2, fig. B-1)
Failure to fire	Weak electrical output of firing mechanism.	Replace firing mechanism (5, fig. B-6)
	Improper contact of spring assembly	Straighten spring assembly (table 3-1)
	Broken contact spring	Replace spring (13, fig. B-5)
Failure to trigger	Obstruction in trigger slot	Remove obstruction
Failure to safety	Defective shunt	Replace electrical firing mechanism (5, fig. B-6).
	Broken trigger lug.....	Replace electrical firing mechanism (5, fig. B-6).

Table 2-2. Troubleshooting-Continued

Malfunction (symptoms)	Probable cause	Corrective action
Failure to lock arm and lock assembly of sight assembly.	Broken locking spring.....	Replace arm and lock assembly (15, fig. B-8).
	Deformed lock.....	Replace arm and lock assembly (15, fig. B-8).
Failure of lens cover to remain open or closed.	Broken spring.....	Replace spring (7, fig. B-8)
Failure to fire accurately.....	Defective sight assembly.....	Repair sight assembly (table 3-1)

Section III. PREEMBARKATION INSPECTION OF MATERIEL IN UNITS ALERTED FOR OVERSEA MOVEMENT

2-4. General

Refer to table 2-3.

Table 2-3. Preembarkation Inspection

Item	Standard
Barrels.....	Barrel bore must be free of paint. Barrel section must be free of dents and corrosion. There must be no play between front and rear barrel sections, when they are coupled together lengthwise and locked in the three possible positions. Barrel hook, barrel hook eye, and barrel latch strike must not be bent or deformed as to prevent assembly and proper latching of barrel sections.
Stocks	Examine stocks for dirt, rust and cracks. Check for damaged wing nuts and bolts.
Contacting latch assembly.....	Inspect components for deformation and for free action with the mating parts. Inspect spring assembly for cracks. Check rivet and detent for damage. Inspect latch springs for deformation, corrosion, pits and tension. Inspect the firing contact for wear or damage. Inspect soldered points of electrical connector on contact lead cable.
Firing mechanism group	Use electrical output tester 7142554. Weapon must have an output of at least 15 milliwatt seconds. Refer to figure 3-6 for testing procedures. Inspect soldered points for electrical contact and strength. Inspect safety for proper operation.
Reflecting sight group	Check lens for scratches and cracks. Check indicator and pointer for correct shape and position. Inspect elevation plate for clear and legible graduations and arm and lock assembly for operation.

Section IV. REMOVAL AND INSTALLATION OF MAJOR COMPONENTS

2-5. General

Refer to table 3-1.

Section V. DEPOT MAINTENANCE INSTRUCTIONS

2-6. General

Depot maintenance instructions are contained in USAWECOM DMWR 1055-201, which is available

through Commanding General, Headquarters, U.S. Army Weapons Command, ATTN: AMSWE-SMM-SA, Rock Island, Illinois 61201.

CHAPTER 3

REPAIR INSTRUCTIONS

3-1. General

This chapter contains procedures for removal and installation, disassembly and assembly, inspection, repair, cleaning and lubricating the rocket launchers.

3-2. Specific Procedures

Refer to table 3-1.

3-3. Cleaning and Lubrication

Refer to table 3-2.

Table 3-1. Guide to Maintenance Functions for 3.5-Inch Rocket Launchers, M20A1 and M20A1B1

Group or assembly	Removal/installation	Disassembly/assembly	Inspection and repair
Front barrel assembly	Refer to TM 9-1055-201-12 and figure B-1.	Refer to figure B-2 (M20A1).	<p>Remove burs in coupling screw. Replace the front barrel assembly when coupling screw is cracked or damaged (M20A1). Replace helical torsion spring, if broken. Replace hook when bent or damaged (M20A1). Replace strike when cracked or damaged (M20A1). Replace barrel latch spring, if broken. Replace front barrel assembly when deflector is cracked or damaged (M20A1). If hook and eye are damaged, replace front barrel (M20A1B1). If front barrel (M20A1B1) is unserviceable, replace.</p> <p>Note. When replacing barrels, use only a cast aluminum front barrel on a cast aluminum rear barrel and a rolled aluminum front barrel on a rolled aluminum rear barrel. Make certain that only matched barrels are used.</p> <p>If machine screws (5305-714-1806) used on M20A1 barrel contain stripped threads, replace with alternate screw (5305-714-2635). Inspect for paint in barrel and barrel coupling. Remove paint.</p>
Stock	Refer to figure 3-1	Refer to figures 3-1 and B-3.	<p>Replace damaged wing nuts and bolts. Repair or replace stock, if damaged.</p>
Contactor latch assembly.	Refer to figure 3-2	Refer to figures B-4 and B-5.	<p>Check rivet and detent of spring assembly. If damaged, replace latch assembly. Replace latch springs if pitted, deformed or un-serviceable. Replace firing contact, if worn or damaged. Straighten spring assembly, if bent.</p>
Firing mechanism group-	Refer to figures 3-3 and 3-4.	Refer to figure B-6.....	<p>Replace trigger guard screws and washer, if worn or damaged. Replace trigger guard and swivel, if damaged. If parts of firing mechanism are worn or damaged, replace mechanism assembly.</p>

Table 3-1. Guide to Maintenance Functions for 3.5-Inch Rocket Launchers, M20A1 and M20A1B1 - Continued

Group or assembly	Removal/installation	Disassembly/assembly	Inspection and repair
<p>Firing mechanism group- -Continued</p> <p>Reflecting sight group</p> <p>Rear barrel assembly</p>	<p>Refer to figure 3-5</p> <p>Refer to TM 9-1065-201-12.</p>	<p>Refer to figures B-7 and B-8.</p> <p>Refer to figures B-9 and B-10.</p> <p>Note. During assembly adjust coupling lock to insure that it does not touch surface of the barrel when fully depressed. Do not rely on spring tension alone since the lock should not touch the surface of the barrel when the front and rear barrels are coupled together (locked position).</p>	<p>Check electrical functioning of contactor latch assembly and firing mechanism (fig. 3-6). If improper electrical output, replace defective components of contactor latch assembly or replace firing mechanism assembly.</p> <p>Replace worn or unserviceable parts.</p> <p>Check for worn or damaged parts. Replace all worn or damaged parts. If machine screws (5305-714-1806) used on M20A1 rear barrel assemblies contain stripped threads, replace with alternate screw (6305-714-26365).</p> <p>Inspect for paint in barrels and barrel coupling. Remove paint.</p>

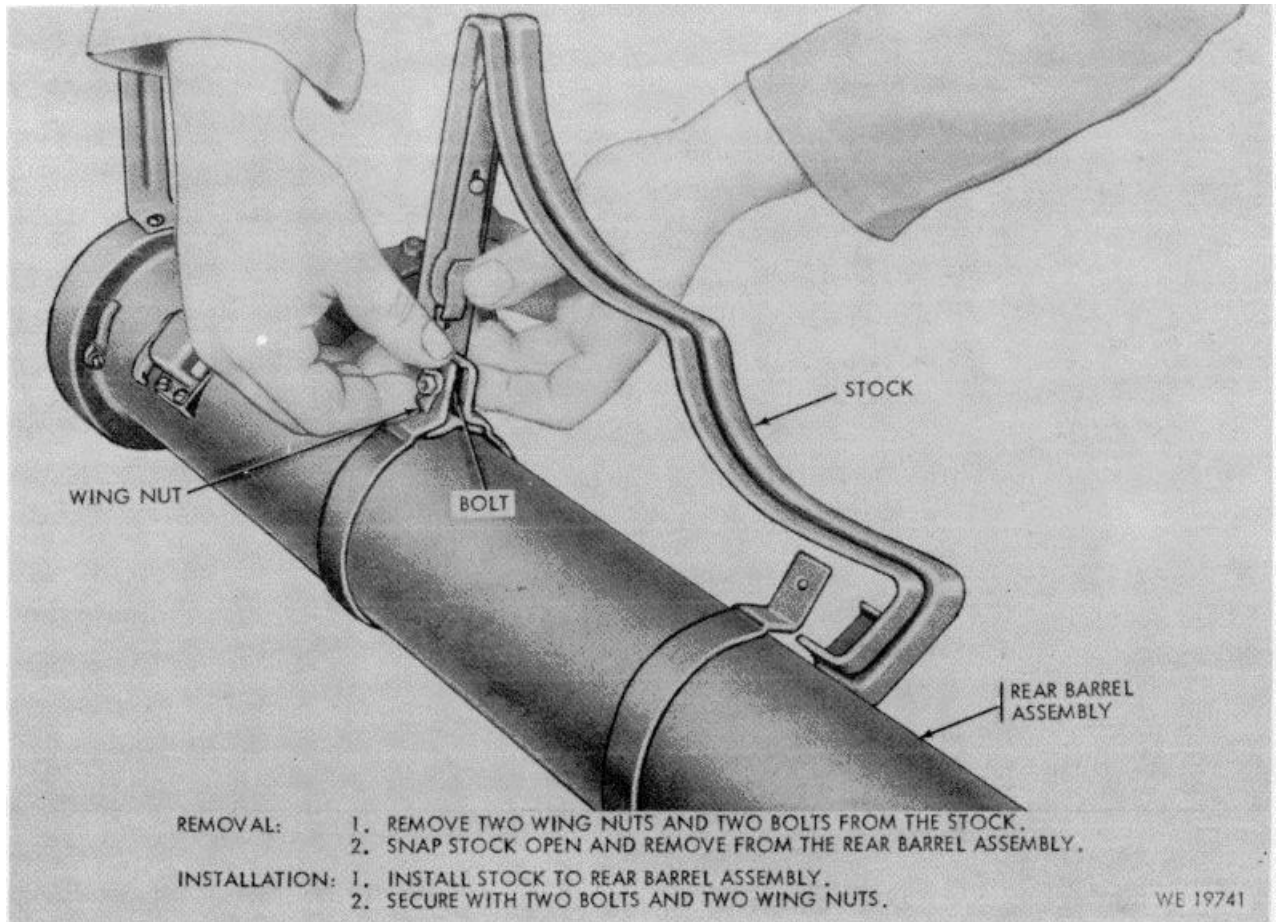
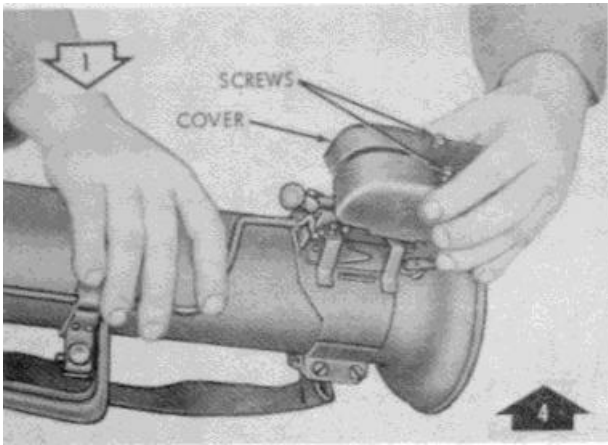
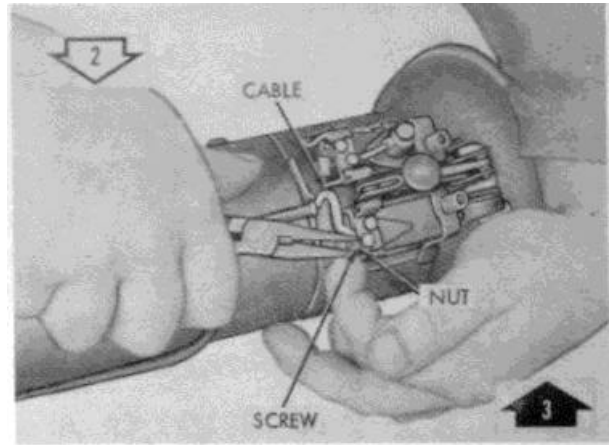


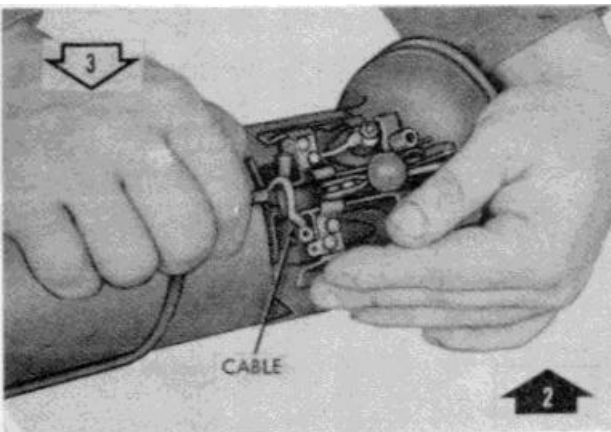
Figure 3-1. Removal/installation of stock.



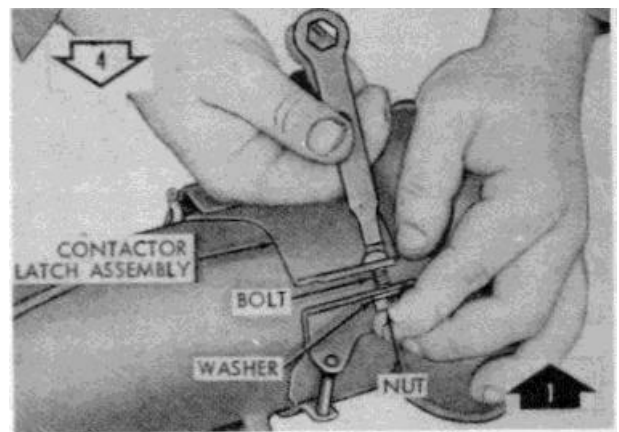
LOOSEN/TIGHTEN TWO SCREWS AND REMOVE/INSTALL COVER.



REMOVE/INSTALL NUT AND SCREW



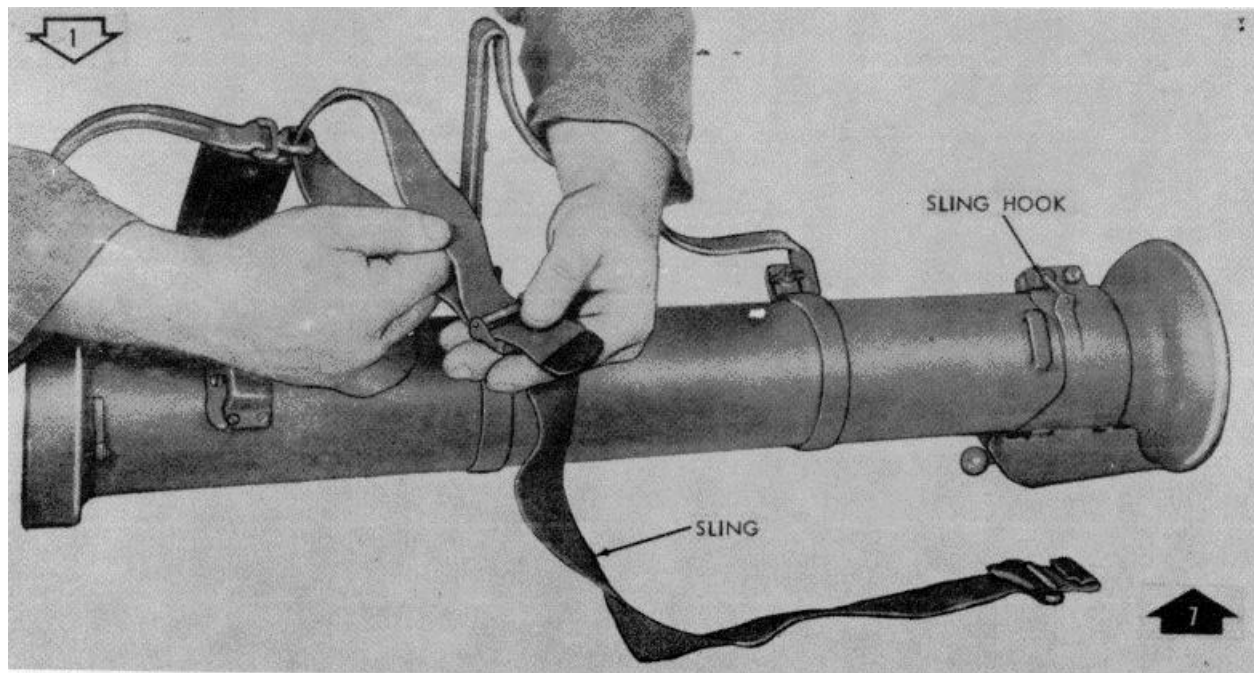
REMOVE/INSTALL CABLE.



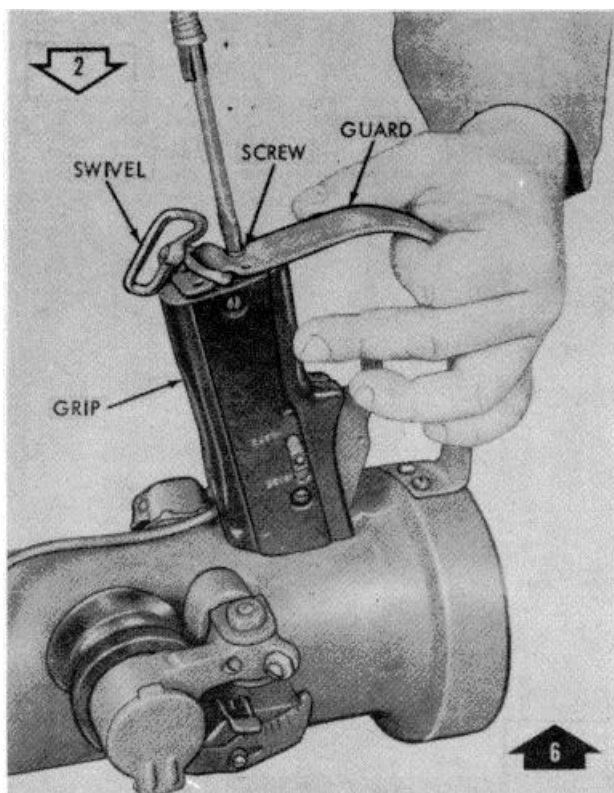
REMOVE/INSTALL TWO NUTS, TWO WASHERS, TWO BOLTS AND CONTACTOR LATCH ASSEMBLY.

Figure 3-2. Removal/installation of contactor latch assembly.

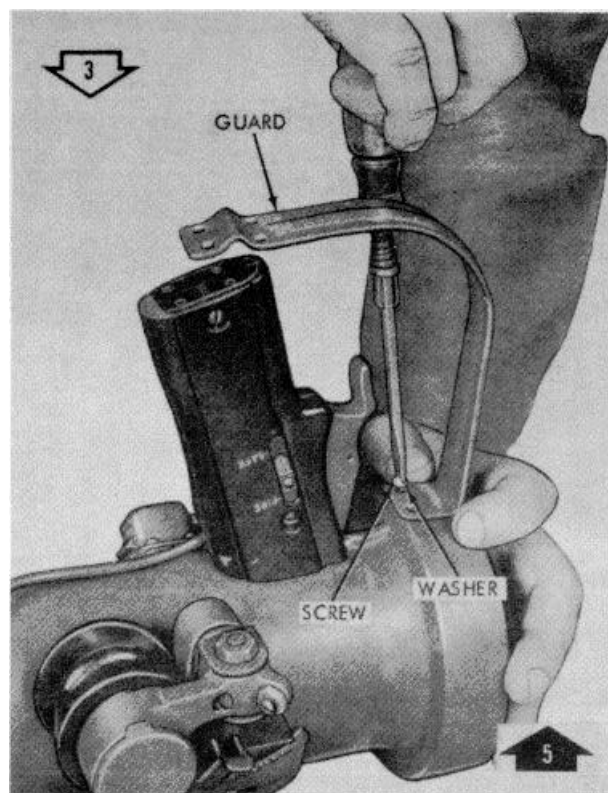
WE 19742



REMOVE/INSTALL SLING FROM/TO SLING HOOK AND DISASSEMBLE/ASSEMBLE SLING FROM/TO SWIVEL.

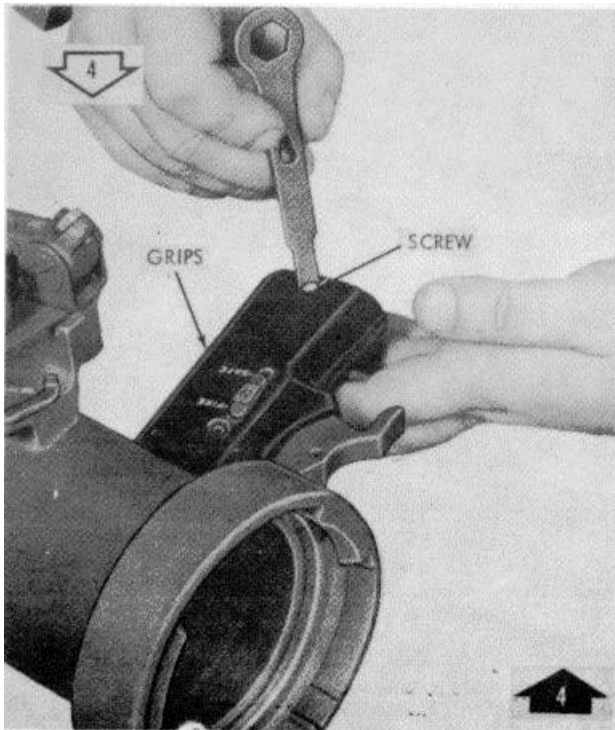


REMOVE/INSTALL FOUR SCREWS AND SWIVEL FROM/TO GUARD AND GRIP.

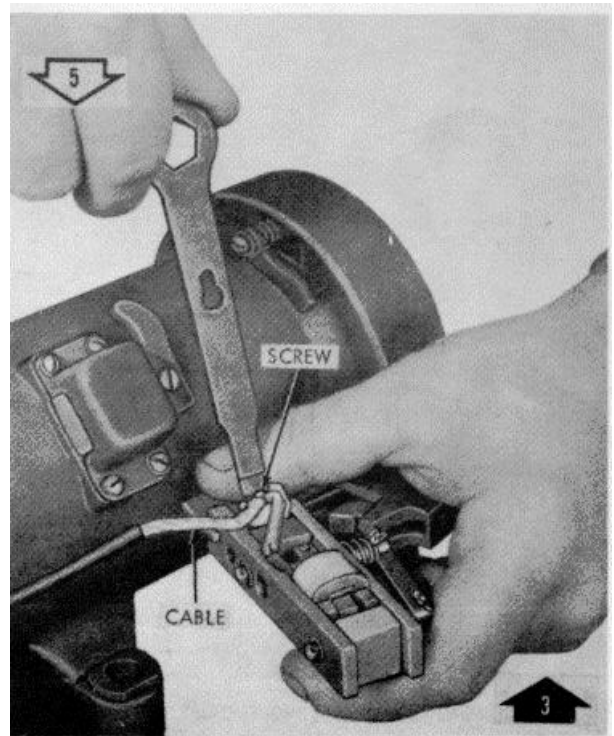


REMOVE/INSTALL TWO SCREWS, TWO WASHERS AND GUARD

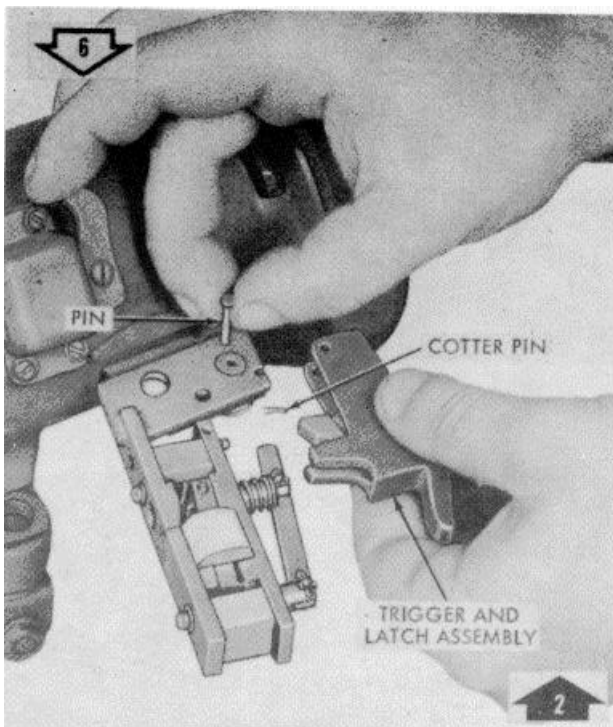
Figure 3-3. Removal/installation of firing mechanism group. (1 of 2)



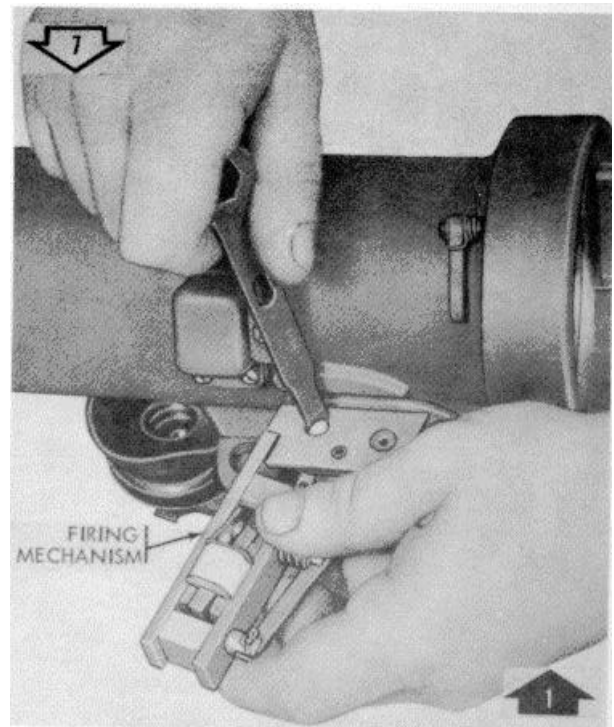
REMOVE/INSTALL TWO SCREWS, TWO NUTS AND GRIPS



REMOVE/INSTALL SCREW AND CABLE



REMOVE/INSTALL COTTER PIN, PIN, TRIGGER AND LATCH ASSEMBLY



REMOVE/INSTALL SCREW, NUT AND FIRING MECHANISM

Figure 3-4. Removal/installation of firing mechanism group. (2 of 2)

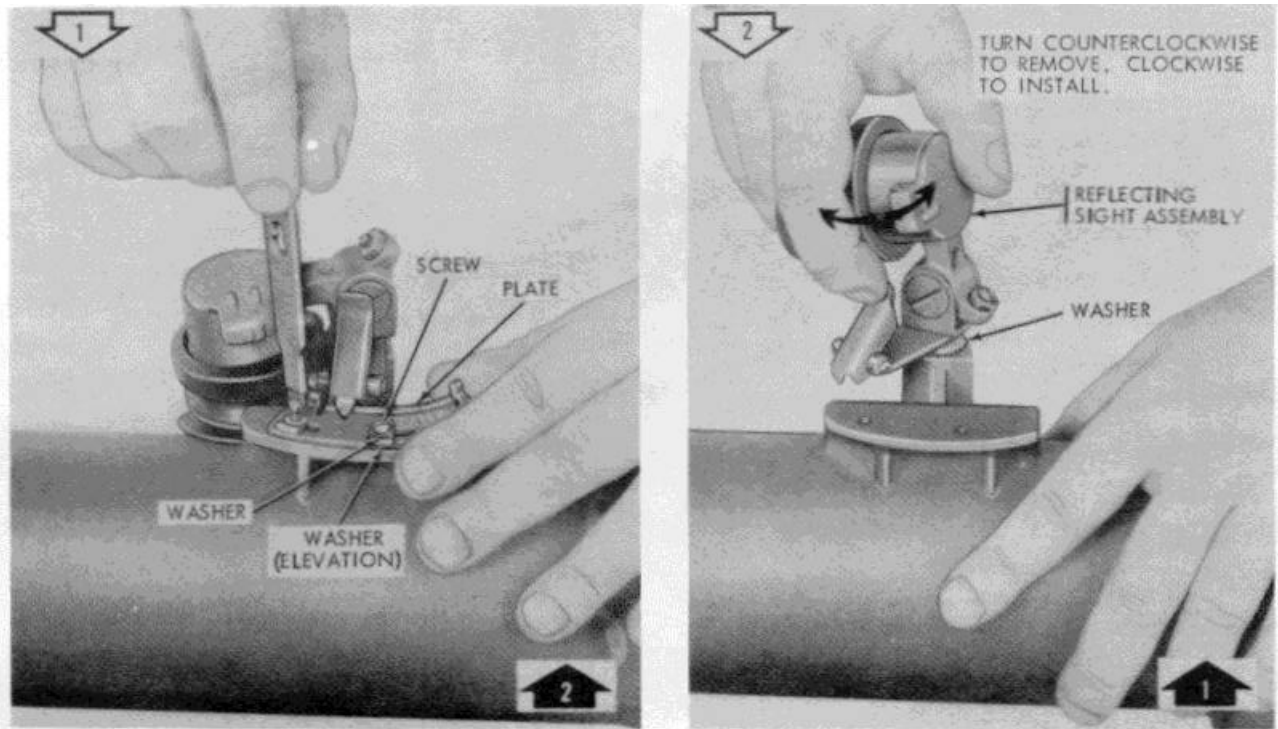


Figure 3-5. Removal/installation of reflecting sight group

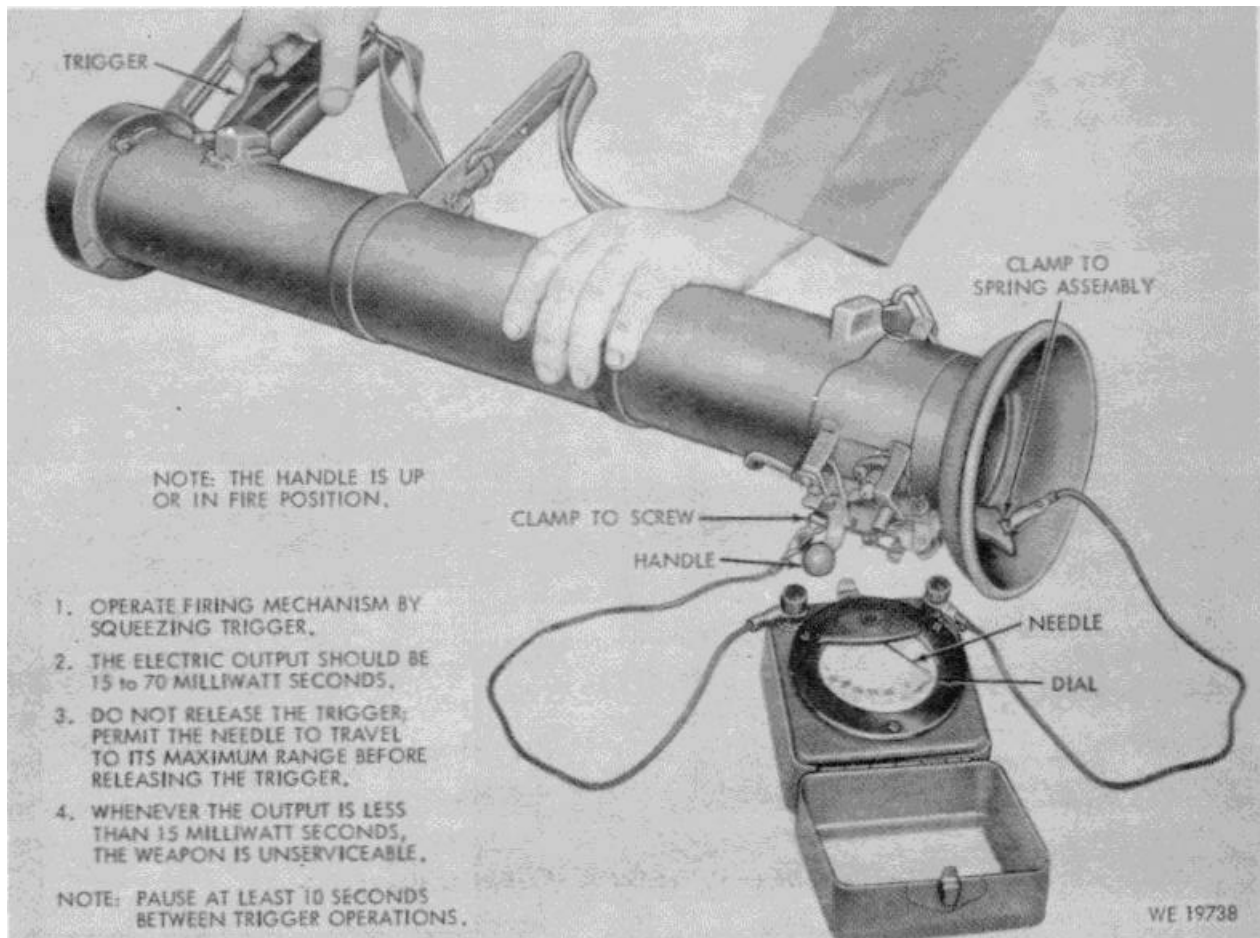


Figure 3-6. Checking electrical functioning of contactor latch assembly and firing mechanism.

Table 3-2. Cleaning and Lubrication

Item	Standard
Front barrels.....	Remove all visible corrosion and apply a light coat of lubricant.
Stock.....	Remove all corrosion.
Contactor latch assembly	Remove all visible corrosion, rust and carbon and apply a light coat of lubricant on all moving parts. Particular attention must be given to the firing contact and spring to insure free movement. See TM 9-1055-201-12 for lubrication points.
Firing mechanism group.....	Remove all corrosion, rust or dirt. (Do not use steel wool.)
Reflecting sight group.....	Remove all rust, corrosion and fungus. Apply a light coat of lubricant to all internal metal parts.
Rear barrel assembly	Remove all visible corrosion and apply a light coat of lubricant.

**CHAPTER 4
FINAL INSPECTION**

4-1. Inspection Procedures

Refer to table 4-1.

Note. Completion of repair operations and

approval of materiel as serviceable depends on the type of inspections made and quality of the work performed at direct and general support maintenance shops.

Table 4-1. Final Inspection

Component or assembly	Point or item of inspection	Method of inspection	Acceptable condition
Launcher	Visual	Complete and serviceable. Determine that applicable modification work orders have been applied.
Launcher	Barrel latch, contactor latch assembly, trigger mechanism, coupling latch safety.	Functional	No missing or damaged components. No looseness or play.
Reflecting sight assembly.	Contactor latch assembly and firing mechanism.	Electrical	Electrical contact in contactors, assembly and firing mechanism (fig. 3-6).
Reflecting sight assembly.	Hinge locking spring	Functional	Spring must retain sight assembly in e extended or folded positions
Reflecting sight assembly.	Lens cover	Functional	Setscrew should hold cover firmly in open and closed positions

APPENDIX A

REFERENCES

A-1. Publication Indexes

The following indexes should be consulted frequently for the latest changes or revision of references given in this appendix and for new publications relating to material covered in this manual.

Military Publications:

Index of Administrative Publications	DA Pam 310-1
Index of Army Films, Transparencies, GTA Charts, and Recordings	DA Pam 108-1
Index of Blank Forms	DA Pam 310-2
Index of Doctrinal, Training, and Organizational Publications	DA Pam 310-3
Index of Supply Catalogs and Supply Manuals (excluding types 7, 8 and 9)	DA Pam 310-6
Index of Technical Manuals, Technical Bulletins, Supply Manuals (types 7, 8 and 9), Supply Bulletins, and Lubrication Orders	DA Pam 310-4
US Army Equipment Index of Modification Work Orders	DA Pam 310-7

A-2. Supply Catalogs

Shop Set, Field Maintenance Small Arms, Post, Camp, and Station, Set A (FSN 4933-347393)	SC 493-95-CL-A01
Tool Kit, Small Arms: Field Maintenance (FSN 4933-754-0664)	SC 4933-95-CL-A
Tool Kit, Small Arms Repairman: (FSN 4933-357-770)	SC 4933-95-CL-A07

A-3. Forms

The following form pertains to this material:
DA Form 2028, Recommended Changes to DA Publications.

A-4. Other Publications

The following explanatory publications pertain to this materiel:

a. *General*

Operator and Organizational Maintenance Manual Including Repair Parts and Special Tools List for Launcher, Rocket, 3.5-Inch, M20A1, W/E (1055-840-1841) and Launcher, Rocket, 3.5-Inch, M20A1B1, W/E (1055-840-1842)	TM 9-1055-201-12
The Army Equipment Record Procedures	TM 38-750
3.5-Inch Rocket Launcher	FM 2332

b. *Cleaning*

Cleaning of Ordnance Materiel	TM -208-1
-------------------------------	-----------

c. *Inspection*

Command Maintenance Management Inspections	AR 750-8
Standards for Overseas Shipment or Domestic Issue of Small Arms, Aircraft Armament, Towed Howitzers, Mortars, Recoilless Rifles, Rocket Launchers and Associated Fire Control Equipment	TB 9-1000-247-385

d. <i>Issue of Supplies and Equipment.</i> Requisitioning, Receipt, and Issue System	AR 725-50
e. <i>Logistics.</i> Malfunctions Involving Ammunition and Explosives (reports control symbol AMC-132)	AR 700-1300-8
f. <i>Maintenance of Supplies and Equipment.</i> Organization, Policies, and Responsibilities for Maintenance Operations	AR 750-5
g. <i>Safety.</i> Accident Reporting and Records	AR 385-40

APPENDIX B

DIRECT SUPPORT, GENERAL SUPPORT AND DEPOT MAINTENANCE REPAIR PARTS AND SPECIAL TOOLS LIST

Section I. INTRODUCTION

B-1. Scope

This appendix lists repair parts, special tools and equipment required for the performance of direct support, general support and depot maintenance of the M20A1 and M20A1B1 Rocket Launchers.

B-2. General

This repair parts and special tools list is divided into the following sections:

a. *Repair Parts-Section II.* A list of repair parts authorized for the performance of maintenance at the direct support, general support, and depot level in figure and item number sequence.

b. *Special Tools, Test and Support Equipment-Section III.* A list of special tools, test and support equipment authorized for the performance of maintenance at the direct support, general support, and depot level.

c. *Federal Stock Number and Reference Number Index-Section IV.* A list of Federal stock numbers in ascending numerical sequence followed by a list of reference numbers in ascending alpha-numeric sequence, cross-referenced to the illustration figure number and item number.

B-3. Explanation of Columns

The following provides an explanation of columns in the tabular lists in sections II through III.

a. *Source, Maintenance, and Recoverability Codes (SMR), Column 1:*

(1) Source code, indicates the selection status and source for the listed item. Source codes used are:

Code	Explanation
P	Repair parts, which are stocked in or supplied from the GSA/DSA, or Army supply system, and authorized for use at indicated maintenance categories.
P2	Repair parts which are procured and stocked for insurance purposes because the combat or military essentially of the end item dictates that a minimum quantity be available in the supply system.
M	Repair parts which are not procured or stocked but are to be manufactured in indicated maintenance levels.
A	Assemblies which are not procured or stocked as such but are made up of two or more units. Such component units carry individual FSN's and descriptions, are procured and stocked separately and can be assembled to form the required assembly at indicated maintenance categories.
X	Parts and assemblies which are not procured or stocked and the mortality of which is normally below that of the applicable end item or component. The failure of such part or assembly should result in retirement of the end item from the supply system.
X1	Repair parts which are not procured or stocked. The requirements for; such items will be filled use of the next higher assembly or component.
by	
X2	Repair parts which are not stocked. The indicated maintenance category requiring such repair parts will attempt to obtain through cannibalization; if not obtainable through cannibalization, such

Code	Explanation
	repair parts will be requisitioned with supporting justification through normal supply channels.
G	Major assemblies that are procured with PEMA funds for initial issue only to be used as exchange assemblies at DSU and GSU level. These assemblies will not be stocked above DSU and GSU level or returned to Depot supply level.

(2) Maintenance code, indicates the lowest category of maintenance authorized to install the listed item. The maintenance level codes are:

Code	Explanation
C	Crew/operator
O	Organizational
F	Direct Support
H	General Support
D	Depot

(3) Recoverability code, indicates whether unserviceable items should be returned for recovery or salvage. Items not coded are expendable. Recoverability codes are:

Code	Explanation
R	Repair parts and assemblies which are economically repairable at DSU and GSU activities and are normally furnished by supply on an exchange basis.
S	Repair parts and assemblies which are economically repairable at DSU and GSU activities and normally are furnished by supply on an exchange basis. When items are determined by a GSU to be uneconomically repairable, they will be evacuated to a depot for evaluation and analysis before final disposition.
T	High dollar value recoverable repair parts which are subject to special handling and are issued on an exchange basis. Such repair parts are normally repaired or overhauled at depot maintenance activities.
U	Repair parts specifically selected for salvage by reclamation units because of precious metal content, critical materials, high dollar value reusable casings, or castings.

No Parts will be considered expendable.

Code
Indicated

b. *Federal Stock Number, Column 2.* This column indicates the Federal stock number assigned to the item and will be used for requisitioning purposes.

c. *Description, Column 3.* This column indicates the Federal item name and any additional description of the item required. The abbreviation "w/e" when used as a part of the nomenclature, indicates the Federal stock number includes all armament, equipment, accessories, and repair parts issued with the item. A part number or other reference number is followed by the applicable five-digit Federal supply code for manufacturers in parentheses.

d. *Unit of Measure (U/M), Column 4.* A 2 character alphabetic abbreviation indicating the amount or quantity of the item upon which the allowances are based, e.g., ft, ea, pr, etc.

e. *Quantity Incorporated in Unit, Column 5.* This column indicates the quantity of the item used in a functional group assembly. A "V" appearing in this column in lieu of a quantity indicates that a definite quantity cannot be indicated (e.g., shims, spacers, etc).

f. *30-Day DS/GS Maintenance Allowances, Column 6 and 7.*

Note. Allowances in GS column are for GS maintenance only.

(1) The allowance columns are divided into three subcolumns. Indicated in each subcolumn, opposite the first appearance of each item, is the total quantity of items authorized for the number of equipment's supported. Subsequent appearances of the same item will have the letters "REF" in the applicable allowance columns. Items authorized for use as required but not for initial stockage are identified with an asterisk in the allowance column.

(2) The quantitative allowances for DS/ GS levels of maintenance will represent initial stockage for a 30-day period for the number of equipment's supported.

(3) Determination of the total quantity of parts required for maintenance of more than 100 of these equipment's can be accomplished by converting the equipment quantity to a decimal factor by placing a decimal point before the next to last digit of the number to indicate hundredths, and multiplying the decimal factor by the parts quantity authorized in the 51-100 allowance column. Example, authorized allowance

for 51-100 equipments is 40; for 150 equipments multiply 40 by 1.50 or 60 parts required.

g. *1-Year Allowances Per 100 Equipments/Contingency Planning Purposes, Column 8.* This column indicates opposite the first appearance of each item the total quantity required for distribution and contingency planning purposes. The range of items required to provide for adequate support of 100 equipments for one year.

h. *Depot Maintenance Allowances Per 100 Equipments, Column 9.* This column indicates opposite the first appearance of each item, the total quantity authorized for depot maintenance of 100 equipments. Subsequent appearances of the same item will have the letters "REF" in the allowance column. Items authorized for use or required but not for initial stockage are identified with an asterisk in the allowance column.

i. *Illustration, Column 10.* This column is divided as follows:

(1) *Figure Number, Column 10a.* Indicates the figure number of the illustration in which the item is shown.

(2) *Item Number, Column 10b.* Indicates the callout number used to reference the item in the illustration.

B-4. Special Information

a. Identification of usable on codes included in column 3 of this publication are:

Code	Used on
A	Model M20A1
B	Model M20A1B1

Note. When no code is shown, the item is applicable to both the M20A1 and M20A1B1 launchers.

b. The following publications pertain to the rocket launchers

TM 9-1005-201-12

Operator and Organizational Maintenance Manual including Repair Parts and Special Tools List for Launcher, Rocket, 3. -Inch, M20A1, W/E (1055-840-1841) and Launcher, Rocket, 3.5-Inch M20AIB1, W/E (1055-840-1842)

B-5. How to Locate Repair Parts

a. When Federal Stock number is unknown:

(1) *First.* Using the table of contents determine the functional group or assembly, i.e., front

barrel assembly, stock, contactor latch assembly, firing mechanism group, reflecting sight group, rear barrel assembly, within which the repair part belongs. This is necessary since the illustrations are prepared for functional groups or assemblies and listings are divided into the same groups.

(2) *Second.* Find the illustration covering the functional group or assembly to which the repair part belongs.

(3) *Third.* Identify the repair part on the illustration and note the illustration figure and item number of the repair part.

(4) *Fourth.* Using the repair parts listing, find the functional group or assembly to which the repair part belongs and locate the illustration figure and item number noted on the illustration.

b. When Federal stock number is known:

(1) *First.* Using the Index of Federal Stock Numbers and Reference Numbers find the pertinent Federal stock numbers or reference number. This index is in ascending FSN sequence followed by a list of reference numbers in ascending alpha-numeric sequence, cross-referenced to the illustration figure number and item number.

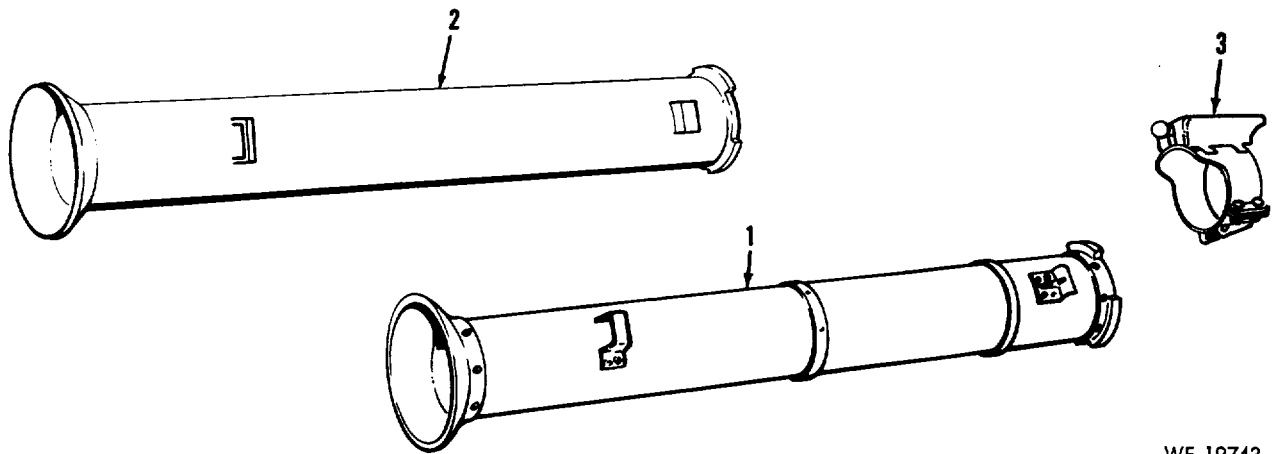
(2) *Second.* Using the Repair Part Listing, find the functional group or assembly of the repair part and the illustration figure and item number referenced in the Index of Federal Stock Numbers and Reference Numbers.

B-6. Abbreviations

Abbreviations	Explanations
al	aluminum
brz	bronze
cd-or zn-pltd	cadmium or zinc plated
cres	corrosion-resistant steel
fl-cskh	flat countersunk head
lt	light
NC	National coarse (thread)
NF	National fine (thread)
NS	National special (thread)
rdh	roundhead
str	straight
UNC	unified coarse thread
UNF	unified fine thread

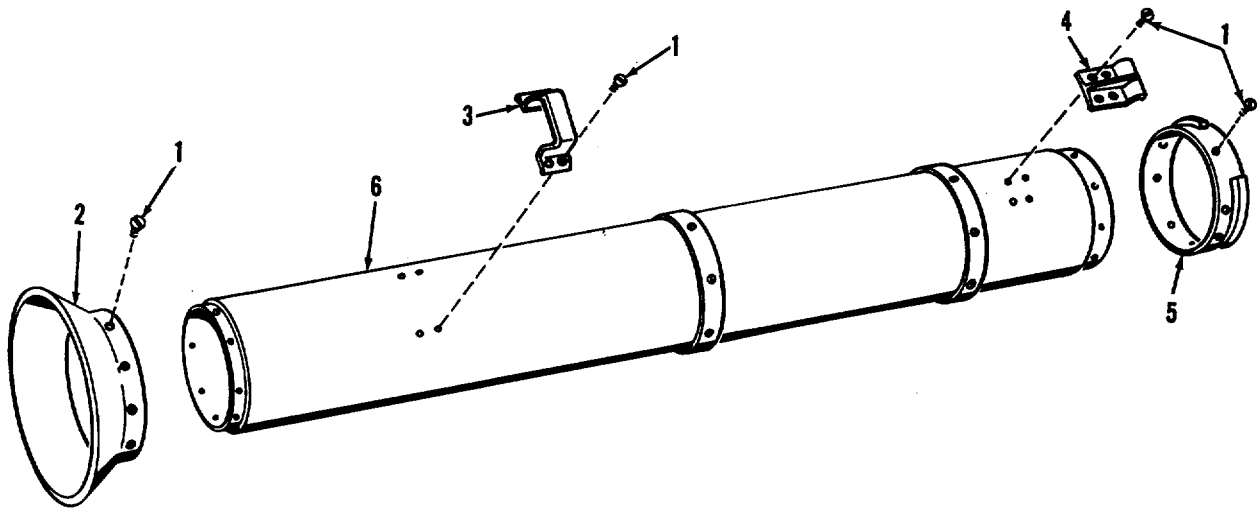
B-7. Federal Supply Codes

Federal Supply Codes	Manufacturers	Federal Supply Codes	Manufacturers
06369	Floor Products Co.	19207	.U.S. Army Tank Automotive
12204	Chrysler Corp.	21450	Rock Island Arsenal
18877	Rohm manufacturing Co.		Ordnance Corps Engineering
19200	Frankford Arsenal		Standards
19204	Rock Island Arsenal	24617	General Motors Corp.
19205	Springfield Armory	96906	Military Standard



WE 19743

Figure B-1. Front barrels and contactor latch assembly



WE 19750

Figure B-2. Front barrel assembly 7147097 (M20A1 only)-exploded view.

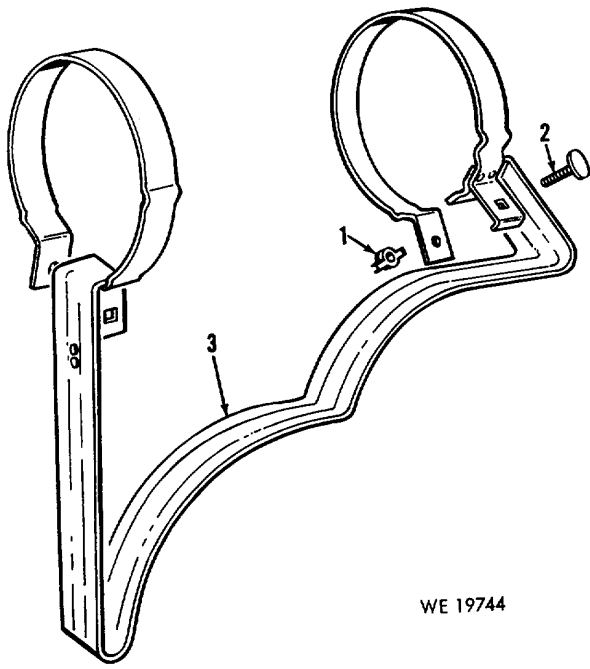


Figure B-3. Stock (M20A1 and M20A1B1)-exploded view.

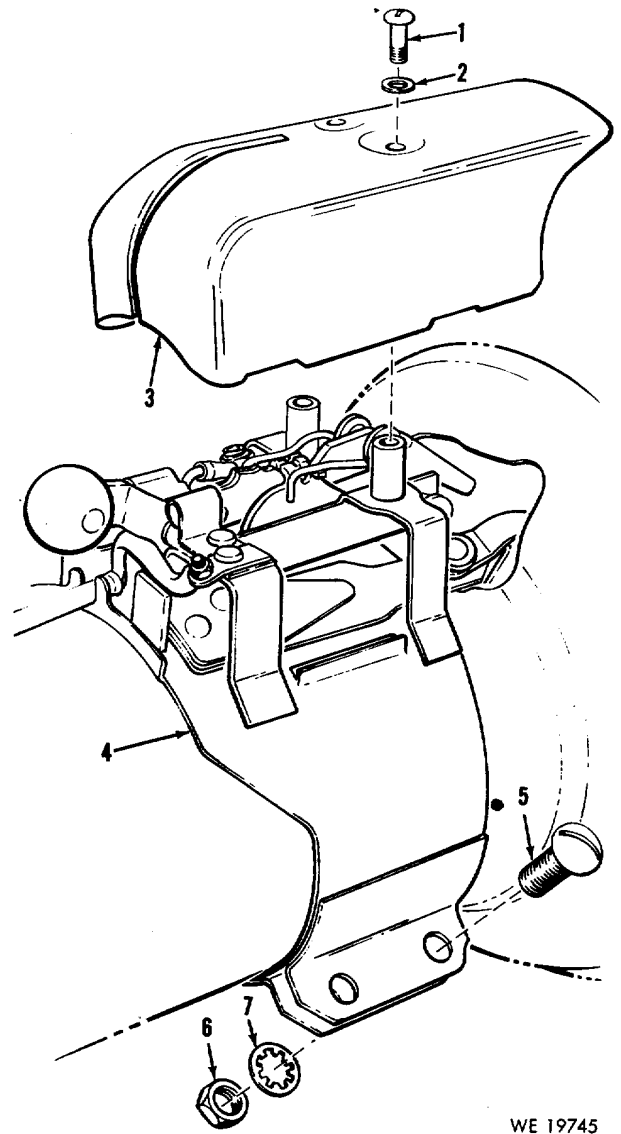


Figure B-4. Contractor latch assembly 7184159 (M20A1 and M20A1B1)--partial exploded view.

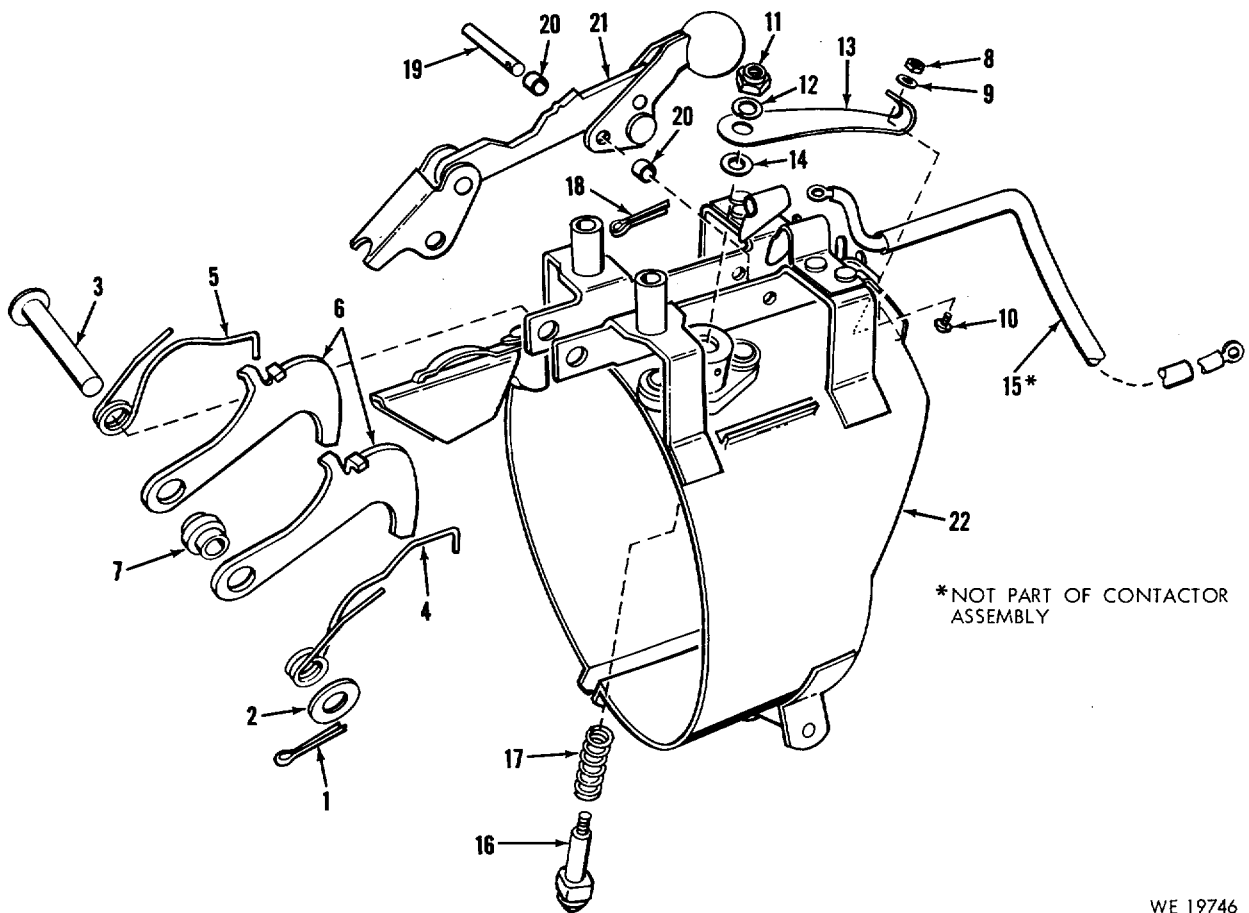


Figure B-5. Contactor latch assembly 7162791 (M20A1 and M20A1B1)-exploded view.

WE 19746

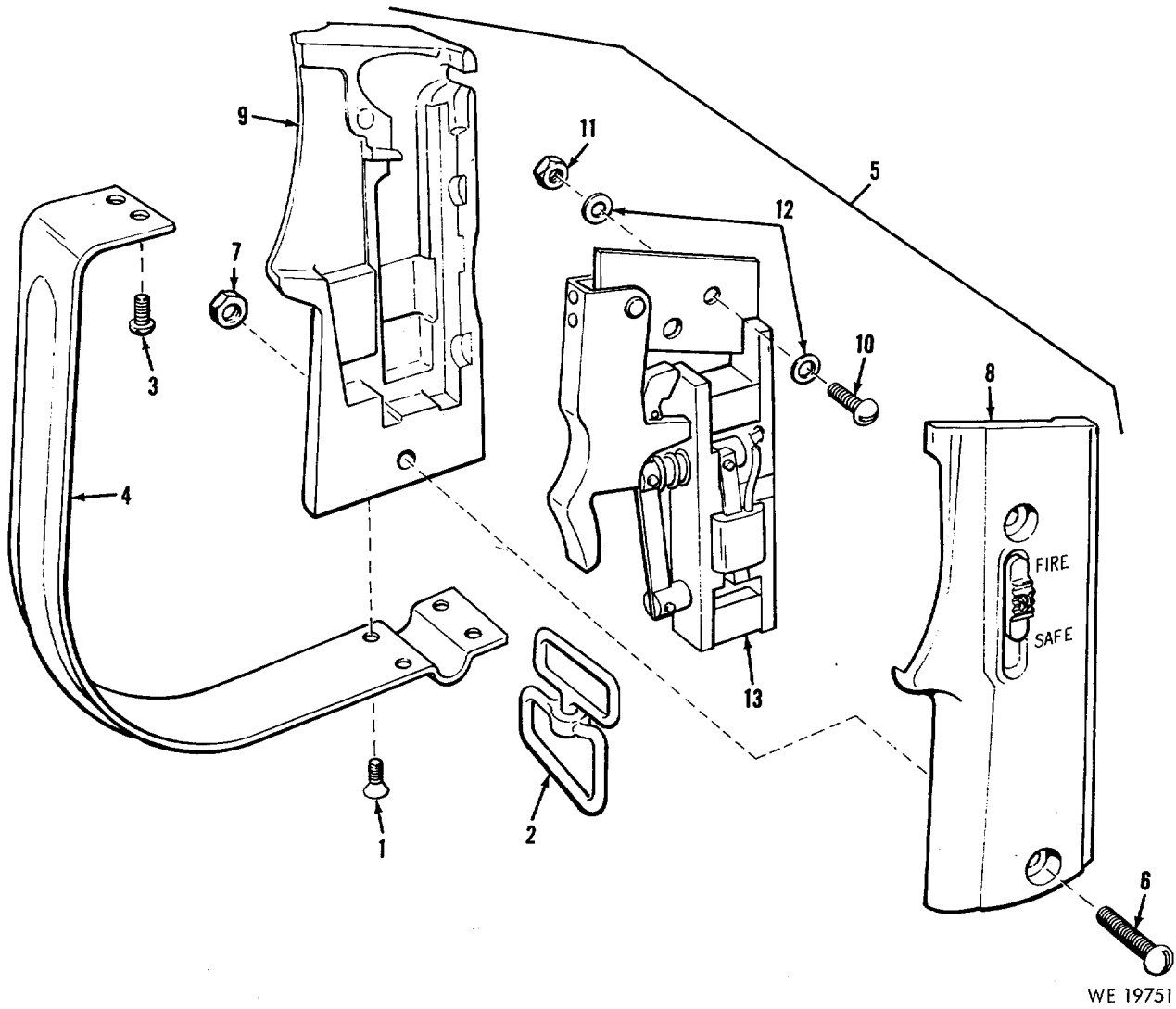
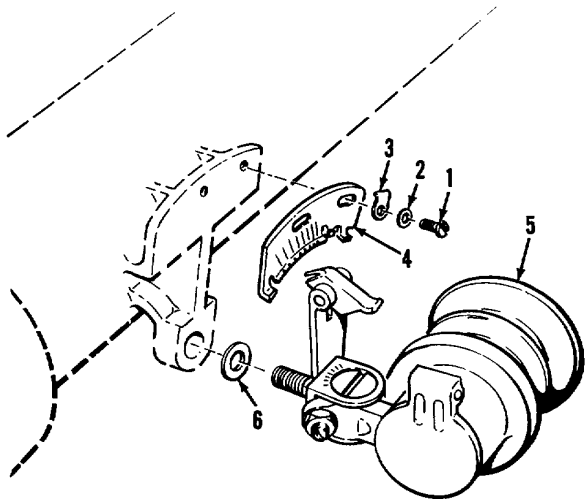
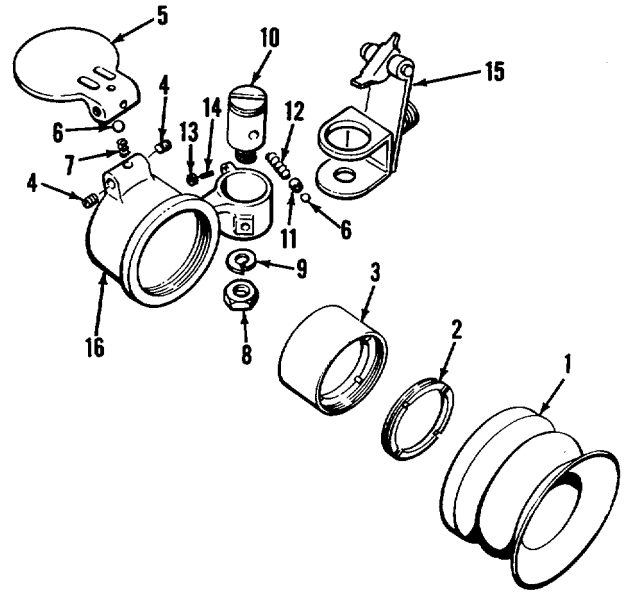


Figure B-6. Firing mechanism group (M20A1 and M20A1B1)-partial exploded view



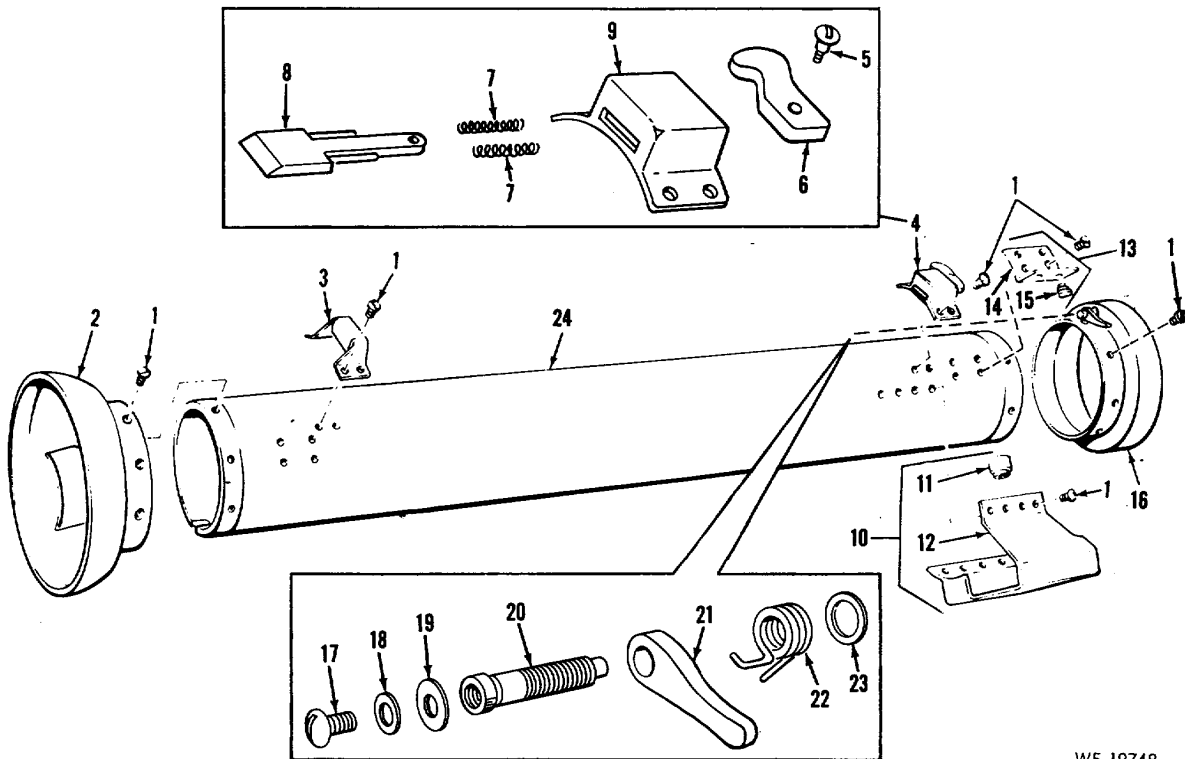
WE 19747

Figure B-7. Reflecting sight group (M20A1 and M20-A1B1)-partial exploded view.



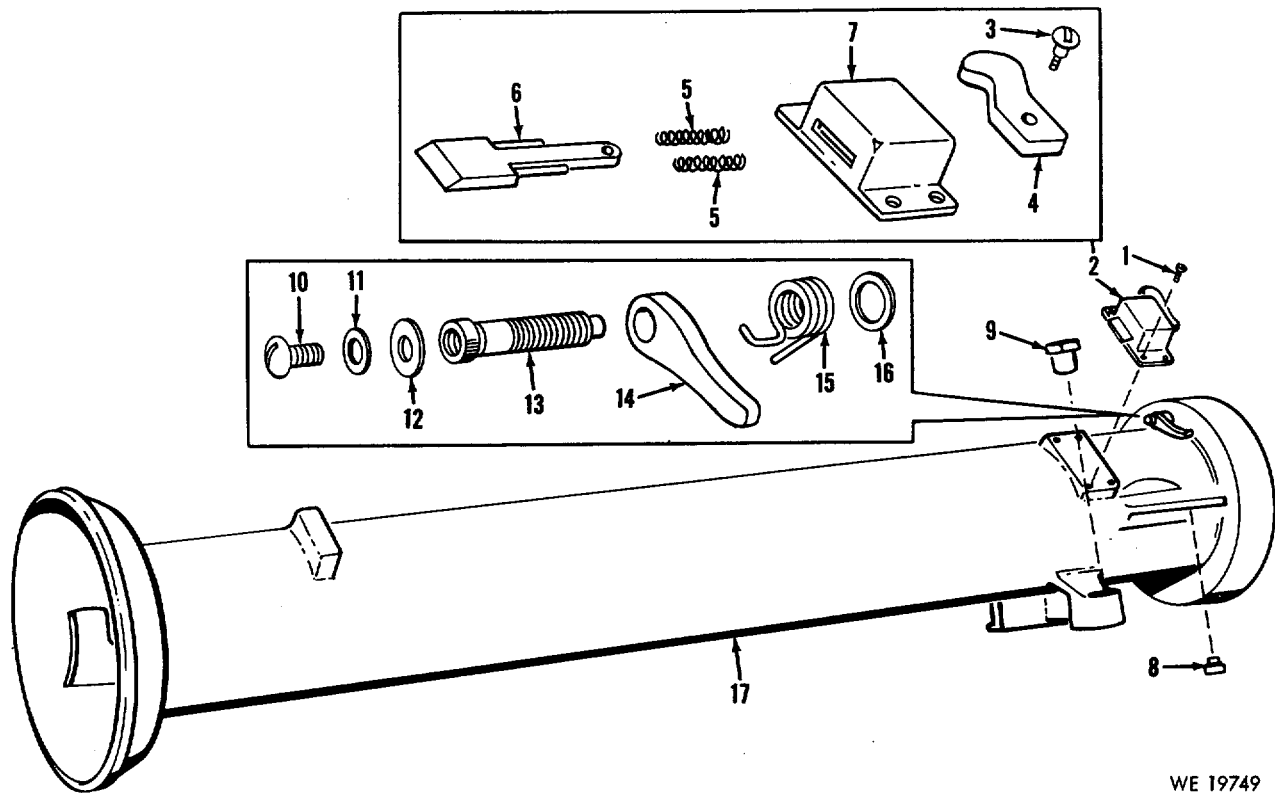
WE 19752

Figure B-8. Reflecting sight assembly 7162947-exploded view.



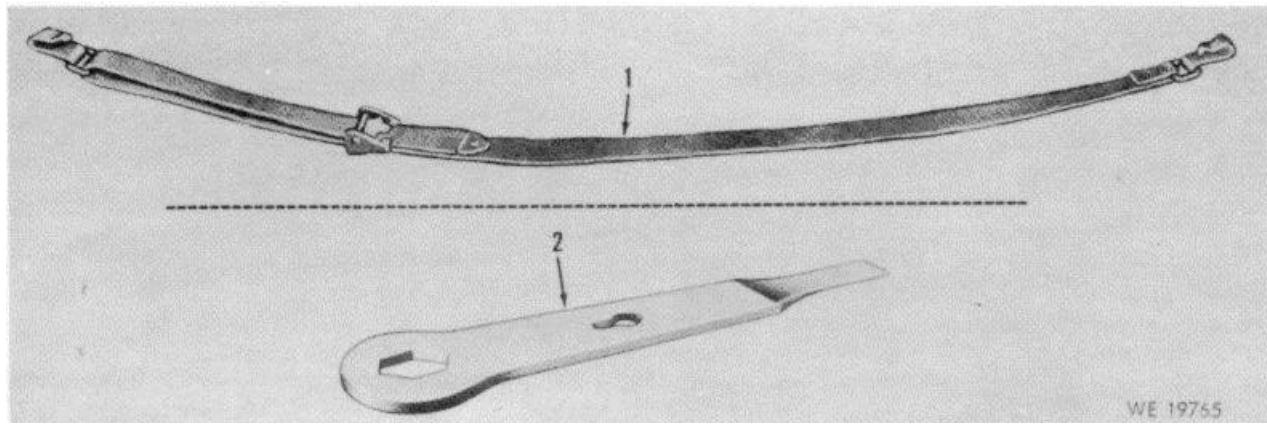
WE 19748

Figure B-9. Rear barrel assembly 713343 (M20A1 only)--exploded view.



WE 19749

Figure B-10. Rear barrel assembly 7140075 (M20A1B1 only)-exploded view.



WE 19765

Figure B-11. Tools and equipment.



Figure B-12. Tester, electrical output 7142554.

B-10

SECTION II. REPAIR PARTS

(1) Source maint and recov code			(2) Federal Stock No.	(3) Description Reference Number & Mfr Code Usable on Code	(4) Unit of meas.	(5) Qty inc in Unit	(6) 30-Day OS maint allowance			(7) 30-Day GS maint allowance			(8) 1-Yr alw per 100 equip cntgcy	(9) Depot maint alw per 100 equip	(10) Illustration	
(a) Source	(b) Maint	(c) Recov					(a) 1-20	(b) 21-50	(c) 51-100	(a) 1-20	(b) 21-50	(c) 51-100			(a) Fig. No.	(b) Item No.
				REPAIR PARTS FOR: LAUNCHER, ROCKET, 3.5-INCH, M20A1 AND M20A1B1 FRONT BARRELS AND CONTACTOR LATCH ASSEMBLY												
P	F	R	1055-714-7097	BARREL ASSEMBLY, FRONT:----- 7147097 (19204) ----- A	EA	1	*	2	2	*	2	2	24	7	B1	1
P	F		1055-714-0682	BARREL, FRONT: AL, 30 LG----- 7140682 (19204) ----- B	EA	1	*	2	2	*	2	2	24	3	B1	2
P	F	R	1055-718-4159	LATCH ASSEMBLY, CONTACTOR: 7184159 (19204)	EA	1	*	2	2	*	2	2	24	10	B1	3
				FRONT BARREL ASSEMBLY. (M20A1 ONLY)											B2	-
P	F		5305-714-1806	SCREW, MACHINE: FL-CSKH, S, CD- OR ZN-PLTD, OR PHOS- CTD, NO. 12-28NF-2A, 0.186LG. 7141806 (19204) ----- A	EA	24	2	2	3	2	2	2	24	6	B2	1
P	F		5305-714-2635	SCREW, MACHINE: FL-CSKH, S, CD- OR ZN-PLTD, 4-28UNF- 2A, 0.186 LG (REPLACEMENT FOR 7141806 IF THREAD IS STRIPPED IN BARREL). 7142635 (19204) ----- A	EA	24	*	2	2	*	2	2	24	16	B2	1
X1			-----	DEFLECTOR, MUZZLE ----- 7313365 ----- A		1									B2	2
P	F		1055-731-3426	STRIKE, BARREL LATCH ----- 7313426 (19205) ----- A	EA	1	*	2	2	*	2	2	24	8	B2	3
P	F		1055-731-3375	HOOK, FRONT BARREL ----- 7313375 (19204) ----- A	EA	1	*	2	2	*	2	2	24	8	B2	4
X1			-----	SCREW COUPLING: ----- 7313404 ----- A		1									B2	5
X1			-----	BARREL, FRONT: ----- 7313340 ----- A		1									B2	6

SECTION II. REPAIR PARTS-Continued

(1) Source maint and recov code			(2) Federal Stock No.	(3) Description Reference Number & Mfr Code Usable on Code	(4) Unit of meas.	(5) Qty inc in Unit	(6) 30-Day OS maint allowance			(7) 30-Day GS maint allowance			(8) 1-Yr alw per 100 equip cntgcy	(9) Depot maint alw per 100 equip	(10) Illustration	
(a) Source	(b) Maint	(c) Recov					(a) 1-20	(b) 21-50	(c) 51-100	(a) 1-20	(b) 21-50	(c) 51-100			(a) Fig. No.	(b) Item No.
		7		STOCK (M20A1 AND M20A1B1)												.B3
P	F		1005-726-5970	NUT, SELF-LOCKING, WING: NO. 10-24NC-2B, 1 5/8 WING W, 1/2 O/A H.	EA	2	*	2	2	*	2	2	24	8	B3	1
P	F		5306-012-8321	7265970 (19205) BOLT, SQUARE NECK: OVAL-HD, S, PHOS-CTD, NO. 10-24NC-2A, 7/8LG.	HD	2	*	2	2	*	2	2	24	8	B3	2
P	F		1055-719-0952	128321 (24617) STOCK, ROCKET LAUNCHER, SHOULDER: S, 10 1/4 O/A LG. 7190952 (19204)	EA	1	*	*	2	*	*	2	24	5	B3	3
				CONTACTOR LATCH ASSEMBLY												B4.
				134159 (M20A1 AND M20A1B1)												
P	F		5305-718-8592	SCREW, EXTERNALLY RE- LIEVED BODY: RDH, S, PHOS- CTD, NO. 10-32NF-3A, 1/2 LG. 7188592 (19204)	EA	2	*	2	2	*	2	2	24	8	B4	1
P	F		5310-718-8594	WASHER, SPRING TENSION: S, PHOS-CTD, 0.190 ID, 3/8 OD, 0.020 THK, 0.051 O/A H. 7188594 (19204)	EA	2	*	2	2	*	2	2	24	8	B4	2
P	F		1055-718-5413	COVER, LATCH:..... 7185413 (19204)	EA	1	*	*	2	*	*	2	24	4	B4	3
X1				LATCH ASSEMBLY, CONTAC- TOR: 7162791		1									B4	4
X1				SCREW, MACHINE: RDH, S, CD- OR ZN-PLTD, 1/4-20UNC-2A X 3/4.		2									B4	5
X1				133043 NUT..... 120375			2								B4	6

X1			WASHER:..... MS 35333-23 (96906)	EA	1									B4	7
				CONTACTOR LATCH ASSEMBLY 7162791 (M20A1 AND M20A1B1)											B5	-
P	F	5315-939-2325		PIN, COTTER: S, CD-PLTD, 1/16 DIA, 1/16 LG. MS 24665-132 (96906)	EA	2	*	2	2	*	2	2	24	8	B5	1
P	F	5310-044-6161		WASHER, FLAT: S, CD- OR ZN- PLTD W/DICHROMATE-FIN., 7/32 ID, 7/16 OD, 0.049 THK, NO. 10 SCREW SIZE.	EA	1	*	2	2	*	2	2	24	36	B5	2
P	F	5315-718'3990		446161 (21450) PIN, STRAIGHT, HEADED: FL- HD, S, 0.186 SHK DIA, 1.265 SHK LG.	EA	1	*	*	2	*	*	2	24	15	B6	3
P	F	1055-718-8718		7183990 (19204) SPRING, HELICAL, TORSION: S, 0.062 STK SIZE, 0.334 OD, 2 1/2 COILS.	EA	1	*	*	2	*	*	2	24	15	B5	4
P	F	1055-718-3994		7188718 (19204) SPRING, LATCH, LEFT HAND:.....	EA	1	*	*	2	*	*	2	24	15	B5	6
P	F	1055-718-8607		7183994 (19204) STOP, CONTACTOR ASSEMBLY, LATCH:	EA	2	*	2	2	*	2	2	24	8	B5	6
P	F	1055-745-7660		7188607 (19204) BUSHING, STOP LEVER:.....	EA	1	*	2	2	*	2	2	24	8	B5	7
P	F	5310-934-9738		7188688 (19204) NUT, PLAIN, HEXAGON: S, CD- OR ZN-PLTD, NO. 2-56NC-2B, 3/16 W, 1 1/6 O/A H.	EA	2	*	*	2	*	*	2	24	15	B5	8
P	F	5310-579-5554		MS 35649-222 (96906) WASHER, LOCK: INT-TEETH, S, CD-PLTD, NO. 2 SCREW SIZE.	EA	2	*	*	2	*	*	2	24	15	B6	9
P	F	5305-762-7482		MS 36533-35 (96906) SCREW, MACHINE: CROSS- RECESSED PAN-HD, S, CD- PLTD, NO. 2-56UNC-2A, 3/16 LG.	EA	2	*	*	2	*	*	2	24	5	B5	10
P	F	5310-081-8087		MS 35206-202 (96906) NUT, SELF-LOCKING, HEXA- GON: S, CD- OR ZN-PLTD, NO. 6-32NC-2B, 5/16 W ACROSS FLATS, 11/64 MS 21044-N06 (96906)	EA	1	*	*	2	*	*	2	24	14	B5	11

SECTION II. REPAIR PARTS-Continued

(1) Source maint and recov code			(2) Federal Stock No.	(3) Description Reference Number & Mfr Code Usable on Code	(4) Unit of meas.	(5) Qty inc in Unit	(6) 30-Day OS maint allowance			(7) 30-Day GS maint allowance			(8) 1-Yr alw per 100 equip cntgcy	(9) Depot maint alw per 100 equip	(10) Illustration	
(a) Source	(b) Maint	(c) Recov					(a) 1-20	(b) 21-50	(c) 51-100	(a) 1-20	(b) 21-50	(c) 51-100			(a) Fig. No.	(b) Item No.
P	F		5310-595-7235	WASHER, LOCK: INT-TEETH, S, CD- OR ZN-PLTD W/CHRO- MATE-FIN., NO. 6 SCREW SIZE.	HD	1	2	2	3	2	2	2	24	10	B6	12
P	F		1055-342-1102	MS 35333-20 (96906) CONTACT, SPRING:.....	EA	1	*	*	2	*	*	2	24	4	B5	13
P	F		1055-092-8973	84156316 (19205) WASHER, FIRING CONTACT: S, 0.140 ID, 5/16 OD, 0.062 THK.	EA	1	*	*	2	*	*	2	24	4	B5	14
P	F		1055-718-8925	8408917 (19205) CABLE, CONTACT LEAD:	EA	1	*	*	2	*	2	2	24	8	B5	15
P	F		1055-718-8533	7188925 (19204) CONTACT, FIRING:	EA	1	*	*	2	*	*	2	24	4	B5	16
P	F		1055-718-85634	7188533 (19205) SPRING, HELICAL, COMPRES- SION: S, 0.035 STK SIZE, 0.281 FREE OD, 0.765 O/A LG, 8 COILS.	EA	1	*	*	2	*	*	2	24	4	B5	17
P	F		5315-939-2325	7188534 (19204) PIN, COTTER: S, CD-PLTD, 16 DIA, 1/16 LG.	EA	1	REF	REF	REF	REF	REF	REF	REF	REF	B5	18
P	F		5315-694-4090	MS 24665-132 (96906) PIN, STRAIGHT, HEADED: PAN- HD, S, 0.155 SHK DIA, 0.685 SHK LG.	EA	1	*	*	2	*	*	2	24	15	B5	19
P	F		1055-694-4076	8409520 (19204) SPACER, SLEEVE: S, 0.161 MAX ID, 0.255 MAX OD, 0.110 MAX O/A LG.	EA	2	*	2	2	*	2	2	24	10	B5	20
P	F		1055-718-8867	8409519 (19204) LINKAGE ASSEMBLY:.....	EA	1	*	*	2	*	*	2	24	15	B5	21
X1			7188867 (19204) STRAP ASSEMBLY:	1	B5	22
				7188841												

			FIRING MECHANISM GROUP (M20A1 AND M20A1B1)											B6	-
P	F	5305-059-4550	SCREW, MACHINE: FL-CSKH, S, CD- OR ZN-CHROMATE- FIN., NO. 6-32NF-2A X 5/16, LG. MS 35190-236 (96906)	HD	4	*	2	2	*	2	2	24	8	B6	1
P	F	1055-714-2468	SWIVEL, SLING: 7142468 (19204)	EA	1	*	2	2	*	2	2	24	8	B6	2
P	F	5305-042-0462	SCREW, ASSEMBLED WASHER: RDH, CD- OR ZN-PLTD, NO. 8-32NC-2A, 5/16, LG. 420462 (21450)	HD	2	*	2	2	*	2	2	24	8	B6	3
P	F	1055-714-0335	GUARD, TRIGGER: 7140335 (19204)	EA	1	*	2	2	*	2	2	24	*	B6	4
P	F	1055-714-0325	MECHANISM, ELECTRICAL, FIRING, GROUP ASSEMBLY: 7140325 (19204)	EA	1	*	2	2	*	2	2	24	8	B6	5
X1		SCREW, MACHINE: MS 35207-267 (96906)	2	B6	6
X1		NUT, PLAIN, HEXAGON: S, PHOS-CTD, NO. 10-32NF-2. MS 35650-103 (96906)	2	B6	7
X1		GRIP: LH..... 7141235	1	B6	8
X1		GRIP: RH..... 7141239	1	B6	9
X1		SCREW, MACHINE:..... MS 35207-262 (96906)	2	B6	10
X1		NUT, PLAIN, HEXAGON:..... MS 35650-102 (96906)	1	B6	11
X1		WASHER, FLAT:..... MS 35333-39 (96906)	2	B6	12
X1		MECHANISM, ELECTRICAL FIRING: 7141236	1	B6	13
			REFLECTING SIGHT GROUP (M20A1 AND M20A1B1)											B7	-
P	F	5305-013-1885	SCREW, MACHINE: FIL-HI, S, CD- OR ZN-PLTD, NO. 6-32NF- 2A, 5/16 LG, ELEV PLATE. 131885 (12204)	HD	2	*	2	2	*	2	2	24	8	B7	1
P	F	5310-595-7235	WASHER, LOCK: INT-TEETH, CD- OR ZN-PLTD W/CHRO- MATE-FIN., NO. 6 SCREW SIZE. MS 36333-20 (96906)	HD	2	REF	REF	REF	REF	REF	REF	REF	REF	B7	2

SECTION II. REPAIR PARTS-Continued

(1) Source maint and recov code			(2) Federal Stock No.	(3) Description Reference Number & Mfr Code Usable on Code	(4) Unit of meas.	(5) Qty inc in Unit	(6) 30-Day OS maint allowance			(7) 30-Day GS maint allowance			(8) 1-Yr alw per 100 equip cntgcy	(9) Depot maint alw per 100 equip	(10) Illustration		
(a) Source	(b) Maint	(c) Recov					(a) 1-20	(b) 21-50	(c) 51-100	(a) 1-20	(b) 21-50	(c) 51-100			(a) Fig. No.	(b) Item No.	
P	F		1055-731-1799	WASHER, ELEVATION PLATE: 7311799 (19205)	EA	2	*	*	2	*	*	2	24	8	B7	3	
P	F		1055-716-2948	PLATE, ELEVATION: 7162948 (19204)	EA	1	*	*	2	*	*	2	24	5	B7	4	
P	F	R	1240-716-2947	SIGHT ASSEMBLY, REFLECT- ING: 7162947 (19204)	EA	1	*	*	2	*	*	2	24	4	B7	5	
P	F		5310-713-8393	WASHER, SPRING TENSION: S, PHOS-CTD AND ENAMEL, OLIVE DRAB, 23/64, ID, ,7/8 OD, 0.020 THK, 0.032 O/A H. 7138393 (19204)	EA	1	*	2	2	*	2	2	24	8	B 7	6	
														B8		-
P	F		6650-355-8920	COVER: 5182872 (19200)	EA	1	*	2	2	*	2	2	24	8	B8	1	
P	F		1055-716-1551	RING, EXTERNALLY THREADED: SLOTTED FACE DRIVE, BRZ, 1 3/16 STR BORE DIA, 1 33/64 NS, 0.125 O/A LG. 7161551 (19205)	EA	1	*	*	2	*	*	2	24	2	B8	2	
P	F		1055-344-2614	LENS ASSEMBLY:..... 7688579 (19204)	EA	1	*	*	2	*	*	2	24	5	B8	3	
P	F		5305-716-1550	SETSCREW: HDLS, FL-PT, S, PHOS-CTD, No. 5-40NC-2A, 0.250 LG. 7161550 (19200)	EA	1	*	*	2	*	*	2	24	4	B8	4	
P	F		1055-716-1552	COVER, LENS: 7161552 (19204)	EA	1	*	*	2	*	*	2	24	3	B8		
P	F		3110-965-8485	BALL, BEARING: CRES, 0.187 DIA. MS 19060-5 (96906)	EA	2	*	2	2	*	2	2	24	8	B8	6	

P	F		1055-716-1555	SPRING, HELICAL, COMPRES- SION: S, PHOS-CTD, 0.033 STK SIZE, 0.161 SOLID OD, 21/64 FREE O/A LG, 4 1/2 COILS. 7161555 (19204)	EA	1	*	2	2	*	2	2	24	8	B8	7
P	F		5310-731-1776	NUT, PLAIN, HEXAGON: S, PHOS-CTD, 5/16,-40NS-2, 9/16 W, 5/32 O/A H. 7311776 (19204)	EA	1	*	*	2	*	*	2	24	4	B8	8
P	F		5310-407-9566	WASHER, LOCK: SPLIT, LT, S, PHOS-CTD, 5/16 SCREW SIZE. MS 35338-45 (96906)	EA	1	*	*	2	*	*	2	24	4	B8	9
P	F		1055-731-1793	STUD, HINGE SIGHT: 7311793 (19205)	EA	1	*	*	2	*	*	2	24	5	B8	10
P	F		1055-731-1784	SEAT, BALL: 7311784 (19205)	EA	1	*	*	2	*	*	2	24	5	B8	11
P	F		1055-731-1789	SPRING, HELICAL, COMPRES- SION: S, 0.035 STK SIZE, 0.203 SOLID OD, 37/64 FREE O/A LG. 7311789 (19206)	EA	1	*	2	2	*	2	2	24	8	B8	12
P	F		5310-579-2163	NUT, PLAIN, HEXAGON: S, CD- OR ZN-PLTD W/CHROMATE, 4-28UNF-2B, 7/16 W ACROSS FLATS. MS 35691-422 (96906)	EA	1	*	*	2	*	*	2	24	10	B8	13
C	F		5305-054-1820	SETSCREW: SLOTTED, FL-PT, S, ZN-PLTD DICHROMATE DIP, 1/4-28UNF, 5/8 LG. MS 51031-62 (96906)	EA	1	*	*	2	*	*	2	24	2	B8	14
P	F		1055-718-7705	ARM AND LOCK ASSEMBLY: 7187705 (19204)	EA	1	*	2	2	*	2	2	24	4	B8	15
X1			FRAME, LENS ASSEMBLY:..... 7188066		1									B8	16
				REAR BARREL ASSEMBLY (M20A1 ONLY)										B9	-
P	F		5305-714-1806	SCREW, MACHINE: FL-CSKH, S, CD- OR ZN-PLTD, OR PHOS- CTD, NO. 12-28NF-2A, 0.186 LG. 7141806 (19204).....A	EA	39	REF	REF	REF	REF	REF	REF	REF	REF	B9	1
P	F		5305-714-2635	SCREW, MACHINE: FL-CSKH, S, CD- OR ZN-PLTD, 1/4-28UNF- 2A, 0.186 LG (REPLACEMENT FOR 7141806 IF THREAD IS STRIPPED IN BARREL). 7142635 (19204).....A	EA	39	REF	REF	REF	REF	REF	REF	REF	REF	B9	1

SECTION II. REPAIR PARTS-Continued

(1) Source maint and recov code			(2) Federal Stock No.	(3) Description Reference Number & Mfr Code Usable on Code	(4) Unit of meas.	(5) Qty inc in Unit	(6) 30-Day OS maint allowance			(7) 30-Day GS maint allowance			(8) 1-Yr alw per 100 equip cntgcy	(9) Depot maint alw per 100 equip	(10) Illustration	
(a) Source	(b) Maint	(c) Recov					(a) 1-20	(b) 21-50	(c) 51-100	(a) 1-20	(b) 21-50	(c) 51-100			(a) Fig. No.	(b) Item No.
X1				GUARD, BREECH: 7138217A		1									B9	2
X1				EYE, REAR BARREL: 7313366A		1									B9	3
A				LATCH ASSEMBLY, BARREL..... 7146803A		1									B9	4
P	F		5305-731-3403	SCREW, SHOULDER, FIL-HD, S, PHOS-CTD, NO. 6-32NC-2A, 5/16 LG. 7313403 (19205)	EA	1	*	2	2	*	2	2	24	8	B9	5
P	F		1055-731-3374	HANDLE, BARREL LATCH: AL, 3/16, THK, 1 9/6 O/A LG. 7313374 (19205)A	EA	1	*	2	2	*	2	2	24	8	B9	6
P	F		1055-731-3416	SPRING, HELICAL, COMPRES- SION: S, CD-PLTD, 0.025 STK SIZE, 0.168 FREE OD, 0.750 FREE O/A LG, 12 COILS. 7313416 (19205)	EA	2	*	2	2	*	2	2	24	8	B9	7
P	F		1055-731-3349	BOLT ASSEMBLY:..... 7313349 (19205)	EA	1	*	2	2	*	2	2	24	8	B9	8
P	F		1055-731-3371	FRAME, BARREL LATCH: 7313371 (19205)A	EA	1	*	*	2	*	*	2	24	5	B9	9
X1				BRACKET ASSEMBLY: SIGHT..... 7140253A		1									B9	10
P	D		5310-714-0254	NUT, PLAIN, ROUND: S, PHOS- CTD, 1/2-40NS, 7/8 OD, 3/ 4 THK. 7140254 (19204)A	EA	1								5	B9	11
X1				BRACKET, SIGHT MOUNTING: 7140255A		1									B9	12
X1				SUPPORT, GRIP ASSEMBLY:..... 7313428A		1									B9	13
X1				SUPPORT, GRIP: 7313427A		1									B9	14
P	F		1055-731-3355	BUSHING, TRIGGER: AL, 0.128 ID, 7/16 LARGEST OD, 0.390 O/A LG. 7313355 (19204)	EA	1	*	2	2	*	2	2	24	5	B9	15

X1			NUT, COUPLING.....		1										B9	16
P	F		5305-984-4983	7313391A SCREW, MACHINE: PAN-HD, S, PHOS-CTD, NO. 6-32NC-2A, 1/4 LG.	HD	1	*	2	2	*	2	2	24	8		B9	17
P	F		5310-013-1196	MS 35206-226 (96906) WASHER, LOCK: SPLIT, LT, S, PHOS-CTD, NO. 6 SCREW SIZE 0.239 OD, 0.025 THK.	HD	1	*	2	2	*	2	2	24	8		B9	18
P	F		5310-731-1798	MS 35337-60 (96906)A WASHER, THRUST: S, PHOS-CTD, 0.140 ID, 3/8 OD, 0.031 O/A THK.	EA	1	*	2	2	*	2	2	24	8		B9	19
P	F		1055-731-2033	7311798 (19205) SCREW, COUPLING LOCK:	EA	1	*	2	2	*	2	2	24	8		B9	20
P	F		1055-731-1774	7312033 (19205) LEVER, COUPLING:	EA	1	*	2	2	*	2	2	24	8		B9	21
P	F		1055-731-2230	7311774 (19205) SPRING, HELICAL TORSION: S, PHOS-CTD OR CD-PLTD, 0.030 STK SIZE, 0.341 OD, 0.210 FREE LG, 6 COILS.	EA	1	*	2	2	*	2	2	24	8		B9	22
P	F		1055-731-2475	7312230 (19205) WASHER, THRUST: S, PHOS- CTD, 17/64 ID, 3/8 OD, 0.032 O/A THK.	EA	1	*	2	2	*	2	2	24	8		B9	23
X1			BARREL, REAR:.....		1										B9	24
				7313342A REAR BARREL ASSEMBLY (M20A1B1 ONLY)												B10	-
P	F		5305-042-0449	SCREW ASSEMBLED WASHER: RDH, S, CD- OR ZN-PLTD, NO. 6-32NC-2A 5/16, LG. 420449 (06369)	HD	4	*	2	2	*	2	2	24	8		B10	1
X1			LATCH, BARREL ASSEMBLY:.....		1										B10	2
P	F		5305-731-3403	7146801B SCREW, SHOULDER: FIL-HD, S, PHOS-CTD, NO. 6-32NC-2A, 5/16 LG.	EA	1	REF	REF	REF	REF	REF	REF	REF	REF		B10	3
P	F		1055-731-3374	7313403 (19205) HANDLE, BARREL LATCH: AL, 5/16, THK, 1 9/16 O/A LG. 7313374 (19204)	EA	1	REF	REF	REF	REF	REF	REF	REF	REF		B10	4

SECTION II. REPAIR PARTS-Continued

(1) Source maint and recov code			(2) Federal Stock No.	(3) Description Reference Number & Mfr Code Usable on Code	(4) Unit of meas.	(5) Qty inc in Unit	(6) 30-Day OS maint allowance			(7) 30-Day GS maint allowance			(8) 1-Yr alw per 100 equip cntgcy	(9) Depot maint alw per 100 equip	(10) Illustration			
(a) Source	(b) Maint	(c) Recov					(a)	(b)	(c)	(a)	(b)	(c)			(a) Fig. No.	(b) Item No.		
P	F		1055-731-3416	SPRING, HELICAL COMPRES- SION: S, CD-PLTD, 0.025 STK , SIZE, 0.168 FREE OD, 0.750 FREE O/A LG, 12 COILS. 7313416 (19204)	EA	2	REF	REF	REF	REF	REF	REF	REF	REF	B10	5		
P	F		1055-731-3349	BOLT ASSEMBLY: 7313349 (19204)	EA	1	REF	REF	REF	REF	REF	REF	REF	REF	B10	6		
P	F		1055-714-1255	HOUSING, BARREL LATCH: 714125566 (19204)	EA	1	*	*	2	*	*	2	24	5	B10	7		
P	F		1055-731-3355	BUSHING, TRIGGER: AL, 0.128 ID, 7/16 LARGEST OD, 0.390 O/A LG. 7313365 (19204)	EA	1	REF	REF	REF	REF	REF	REF	REF	REF	B10	8		
P	D		5310-719-1030	NUT, SLEEVE: OPEN END, S, PHOS-CTD. 1/2-40NS, 0.627 SHK DIA, 3/4 LG. 7191030 (18877)	EA	110										B10	9
P	F		5305-984-4983	SCREW, MACHINE; PAN-HD, S, PHOS-CTD, NO. 6-32NC-2A, 1/4 LG. MS 35206-226 (96906)	HD	1	REF	REF	REF	REF	REF	REF	REF	REF	B10	10		
P	F		5310-013-1196	WASHER, LOCK: SPLIT, LT, S, PHOS-CTD, NO. 6 SCREW SIZE, 0.239 OD, 0.025 THK. MS 35337-60 (96906)	HD	1	REF	REF	REF	REF	REF	REF	REF	REF	B10	11		
P	F		5310-731-1798	WASHER, THRUST: S, PHOS- CTD, 0.140 ID, 3/8 OD, 0.031 O/A THK. 7311798 (19205)	EA	1	REF	REF	REF	REF	REF	REF	REF	REF	B10	12		
P	F		1055-731-2033	SCREW, COUPLING LOCK: 7312033 (19205)	EA	1	REF	REF	REF	REF	REF	REF	REF	REF	B10	13		
P	F		1055-731-1774	LEVER, COUPLING: 7311774 (19205)	EA	1	REF	REF	REF	REF	REF	REF	REF	REF	B10	14		
P	F		1055-731-2230	SPRING, HELICAL, TORSION: PHOS-CTD OR CD-PLTD, 0.030 STK SIZE, 0.341 OD, 0.210 FREE LG, 6 COILS. 7312230 (19206)	EA	1	REF	REF	REF	REF	REF	REF	REF	REF	B10	15		

P	F		1055-731-2475	WASHER, THRUST: S, PHOS- CTD, 17/64 ID, 3/8 OD, 0.082 O/A THK.	EA	1	REF	REF	REF	REF	REF	REF	REF	REF	B10	16
X1			7312475 (19205) BARREL, REAR:..... 7140681.....B	1	B10	17

SECTION III. TOOLS AND EQUIPMENT

(1) Source maint and recov code			(2) Federal Stock No.	(3) Description Reference Number & Mfr Code Usable on Code		(4) Unit of meas.	(5) Qty inc in Unit	(6) 30-Day OS maint allowance			(7) 30-Day GS maint allowance			(8) 1-Yr alw per 100 equip cntgcy	(9) Depot maint alw per 100 equip	(10) Illustration	
(a) Source	(b) Maint	(c) Recov						(a)	(b)	(c)	(a)	(b)	(c)			(a) Fig. No.	(b) Item No.
				TOOLS AND EQUIPMENT											B11	-
	C		1005-654-4058	SLING, SMALL ARMS: M1 WEBBING. 6544058 (19207)	EA	*	2	2	*	2	2	24		B11	1
	C		4933-714-9835	WRENCH AND SCREWDRIVER COMBINATION: 7149835 (19204)	EA	*	2	2	*	2	2	24		B11	2
				SPECIAL EQUIPMENT													
P	F	T	1055-714-2554	THE 15-DAY LEVEL IS NOT APPLICABLE. TESTER, ELECTRICAL OUTPUT: FIRING MECH. 7142554 (19204)	EA	*	*	*	*	*	*	1		B12	-

**Section IV. INDEX-FEDERAL STOCK NUMBER AND REFERENCE NUMBER
CROSS-REFERENCE TO FIGURE AND ITEM NUMBER**

<i>STOCK NUMBER</i>	<i>FIGURE NO.</i>	<i>ITEM NO.</i>	<i>STOCK NUMBER</i>	<i>FIGURE NO.</i>	<i>ITEM NO.</i>
1005-654-4058	B-11	1	1055-731-3375	B-2	4
1005-726-5970	B-3	1	1055-731-3416	B-9	7
1055-092-8973	B-6	14		B-10	5
1055-342-1102	B-5	13	1055-731-3426	B-2	3
1055-344-2614	B-8	3	1055-745-7660	B-5	7
1055-694-4076	B-6	20	1240-716-2947	B-7	5
1055-714-0325	B-6	5	3110-965-8485	B-8	6
1055-714-0335	B-6	4	4933-714-9835	B-11	2
1055-714-0682	B-1	2	5305-013-1885	B-7	1
1055-714-1255	B-10	7	5305-042-0449	B-10	1
1055-714-2468	B-6	2	5305-042-0462	B-6	3
1055-714-2554	B-12	-	5305-054-1820	B-8	14
1055-714-7097	B-1	1	5305-059-4550	B-6	1
1055-716-1551	B-8	2	5305-714-1806	B-2	1
1055-716-1552	B-8	5		B-9	1
1055-716-1555	B-8	7	5305-714-2635	B-2	1
1055-716-2948	B-7	4		B-9	1
1055-716-8867	B-5	21	5305-716-1550	B-8	4
1055-718-3994	B-5	5	5305-718-8592	B-4	1
1055-718-4159	B-1	3	5305-731-3403	B-9	5
1055-718-5413	B-4	3		B-10	3
1055-718-7705	B-8	15	5305-762-7482	B-5	10
1055-718-8533	B-5	16	5305-984-4983	B-9	17
1055-718-8534	B-5	17		B-10	10
1055-718-8607	B-5	6	5305-012-8321	B-3	2
1055-718-8718	B-5	4	5310-013-1196	B-9	18
1055-718-8867	B-5	21		B-10	11
1055-718-8925	B-5	16	5310-044-6161	B-5	2
1055-719-0952	B-3	3	5310-081-8087	B-5	11
1055-731-1774	B-9	21	5310-407-9566	B-8	9
	B-10	14	5310-579-2163	B-8	13
1055-731-1784	B-8	11	5310-579-6554	B-5	9
1055-731-1789	B-8	12	5310-595-7235	B-5	12
1055-731-1793	B-8	10		B-7	2
1055-731-1799	B-7	3	5310-713-8393	B-7	6
1055-731-2033	B-9	20	5310-714-0254	B-9	11
	B-10	13	5310-718-8594	B-4	2
1055-731-2230	B-9	22	5310-719-1030	B-10	9
	B-10	15	5310-731-1776	B-8	8
1055-731-2475	B-9	23	5310-731-1798	B-9	19
	B-10	16		B-10	12
1055-731-3349	B-9	8	5310-934-9738	B-5	8
	B-10	6	5315-694-4090	B-5	19
1055-731-3355	B-9	15	5315-718-3990	B-5	3
	B-10	8	5316-939-2325	B-5	1
1055-731-3371	B-9	9		B-5	18
1055-731-3374	B-9	6	6650-355-8920	B-8	1
	B-10	4			

**Section IV. INDEX-FEDERAL STOCK NUMBER AND REFERENCE NUMBER
CROSS-REFERENCE TO FIGURE AND ITEM NUMBER-Continued**

<i>Reference No.</i>	<i>Mfg Code</i>	<i>Fig. No.</i>	<i>Item No.</i>	<i>Reference No.</i>	<i>Mfg Code</i>	<i>Fig. No.</i>	<i>Item No.</i>
MS 19060-5	96906	B-8	6	7161555	19204	B-8	7
MS 21044-N06	96906	B-5	11	7162791	-	B-4	4
MS 24665-132	96906	B-5	1	7162947	19204	B-7	5
		B-5	18	7162948	19204	B-7	4
MS 35190-235	96906	B-6	1	7183990	19204	B-5	3
MS 35206-202	96906	B-5	10	7183994	19204	B-5	5
MS 35206-226	96906	B-9	17	7184159	19204	B-1	3
		B-10	10	7185413	19204	B-4	3
MS 35207-262	96906	B-6	10	7187705	19204	B-8	15
MS 35207-267	96906	B-6	6	7188066	-	B-8	16
MS 35333-20	96906	B-5	12	7188533	19205	B-5	16
		B-7	2	7188534	19204	B-5	17
MS 35333-23	96906	B-4	7	7188588	19204	B-5	7
MS 35333-35	96906	B-5	9	7188592	19204	B-4	1
MS 35333-39	96906	B-6	12	7188594	19204	B-4	2
MS 35337-60	96906	B-9	18	7188607	19204	B-5	6
		B-10	11	7188718	19204	B-5	4
MS 35338-45	96906	B-8	9	7188841	-	B-5	22
MS 35649-222	96906	B-5	8	7188867	19204	B-5	21
MS 35650-102	96906	B-6	11	7188925	19204	B-5	15
MS 35650-103	96906	B-6	7	7190952	19204	B-3	3
MS 35691-422	96906	B-8	13	7191030	18877	B-10	9
MS 51031-62	96906	B-8	14	7265970	19205	B-3	1
120375	-	B-4	6	7311774	19205	B-9	21
128321	24617	B-3	2			B-10	14
131885	12204	B-7	1	7311776	19204	B-8	8
133043	-	B-4	5	7311784	19205	B-8	11
420449	06369	B-10	1	7311789	19205	B-8	12
420462	21450	B-6	3	7311793	19205	B-8	10
446161	21450	B-5	2	7311798	19205	B-9	19
5182872	19200	B-8	1			B-10	12
6544058	19207	B-11	1	7311799	19205	B-7	3
7138217	-	B-9	2	7312033	19205	B-9	20
7138393	19204	B-7	6			B-10	13
7140253	-	B-9	10	7312230	19205	B-9	22
7140254	19204	B-9	11			B-10	15
7140255	-	B-9	12	7312475	19205	B-9	23
7140325	19204	B-6	5			B-10	16
7140335	19204	B-6	4	7313340	-	B-2	6
7140681	-	B-10	17	7313342	-	B-9	24
7140682	19204	B-1	2	7313349	19205	B-9	8
7141235	-	B-6	8			B-10	6
7141236	-	B-6	13	7313355	19204	B-9	15
7141239	-	B-6	9			B-10	8
7141255	19204	B-10	7	7313365	-	B-2	2
7141806	19204	B-2	1	7313366	-	B-9	3
		B-9	1	7313371	19205	B-9	9
7142468	19204	B-6	2	7313374	19205	B-9	6
7142554	19204	B-12	-			B-10	4
7142635	19204	B-2	1	7313375	19204	B-2	4
		B-9	1	7313391	-	B-9	16
7146801	-	B-10	2	7313403	19205	B-9	5
7146803	-	B-9	4			B-10	3
7147097	19204	B-1	1	7813404	-	B-2	5
7149835	19204	B-11	2	7313416	19205	B-9	7
7161550	19200	B-8	4			B-10	5
7161551	19205	B-8	2	7313426	19205	B-2	3
7161552	19204	B-8	5	7313427	-	B-9	14

**Section IV. INDEX-FEDERAL STOCK NUMBER AND REFERENCE NUMBER
CROSS-REFERENCE TO FIGURE AND ITEM NUMBER-Continued**

<i>Reference No.</i>	<i>Mfg Code</i>	<i>Fig. No.</i>	<i>Item No.</i>	<i>Reference No.</i>	<i>Mfg Code</i>	<i>Fig. No.</i>	<i>Item No.</i>
7313428	-	B-9	13	8409519	19204	B-5	20
7688579	19204	B-8	3	8409520	19204	B-5	19
8403917	19205	B-5	14	8415316	19205	B-5	13

By Order of the Secretary of the Army:

Official:

KENNETH G. WICKHAM,
*Major General, United States Army,
The Adjutant General*

W. C. WESTMORELAND,
*General, United States Army,
Chief of Staff*

DISTRIBUTION:

To be distributed in accordance with DA Form 12-40 (qty rqr Block #35), Direct and General Support maintenance requirements for Launcher, Rocket, 3.5-Inch, M20A1 and M20A1B1.

* U.S. GOVERNMENT PRINTING OFFICE : 1991 - 281-486 (42127)

RECOMMENDED CHANGES TO EQUIPMENT TECHNICAL PUBLICATIONS



THEN... JOT DOWN THE DOPE ABOUT IT ON THIS FORM, CAREFULLY TEAR IT OUT, FOLD IT AND DROP IT IN THE MAIL!

SOMETHING WRONG WITH THIS PUBLICATION?

FROM: (PRINT YOUR UNIT'S COMPLETE ADDRESS)

DATE SENT

PUBLICATION NUMBER

PUBLICATION DATE

PUBLICATION TITLE

BE EXACT... PIN-POINT WHERE IT IS

PAGE NO.	PARA-GRAPH	FIGURE NO.	TABLE NO.

IN THIS SPACE TELL WHAT IS WRONG AND WHAT SHOULD BE DONE ABOUT IT:

TEAR ALONG PERFORATED LINE

PRINTED NAME, GRADE OR TITLE, AND TELEPHONE NUMBER

SIGN HERE:

DA FORM 2028-2
1 JUL 79

PREVIOUS EDITIONS ARE OBSOLETE.

P.S.—IF YOUR OUTFIT WANTS TO KNOW ABOUT YOUR RECOMMENDATION MAKE A CARBON COPY OF THIS AND GIVE IT TO YOUR HEADQUARTERS.

PIN: 026495-000